

For Research Use Only

# PSMA5 Polyclonal antibody, PBS Only

Catalog Number:30580-1-PBS



## Basic Information

**Catalog Number:**

30580-1-PBS

**Size:**

100ug, Concentration: 1 mg/ml by Nanodrop;

**Source:**

Rabbit

**Isotype:**

IgG

**Immunogen Catalog Number:**

AG30703

**GenBank Accession Number:**

NM\_002790

**GeneID (NCBI):**

5686

**UNIPROT ID:**

P28066

**Full Name:**

proteasome (prosome, macropain) subunit, alpha type, 5

**Calculated MW:**

26 kDa

**Observed MW:**

28 kDa

**Purification Method:**

Antigen affinity purification

## Applications

**Tested Applications:**

WB, IHC, IF/ICC, Indirect ELISA

**Species Specificity:**

human, mouse

## Background Information

Proteasome subunit alpha type-5(PSMA5) is a component of the 20S core proteasome complex involved in the proteolytic degradation of most intracellular proteins. This complex plays numerous essential roles within the cell by associating with different regulatory particles. It binds to two 19S regulatory particles(RP) to form the 26S proteasome, an ATP-dependent multisubunit protease that degrades polyubiquitinated proteins into small peptides. (PMID: 26661102)

## Storage

**Storage:**

Store at -80°C.

**Storage Buffer:**

PBS only, pH7.3

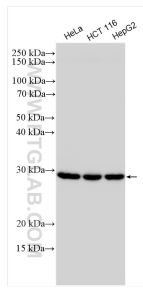
For technical support and original validation data for this product please contact:

T: 1 (888) 4PTGLAB (1-888-478-4522) (toll free in USA), or 1(312) 455-8498 (outside USA)

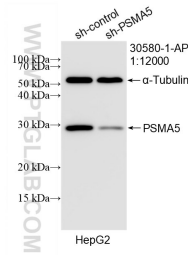
E: [proteintech@ptglab.com](mailto:proteintech@ptglab.com)  
W: [ptglab.com](http://ptglab.com)

**This product is exclusively available under Proteintech Group brand and is not available to purchase from any other manufacturer.**

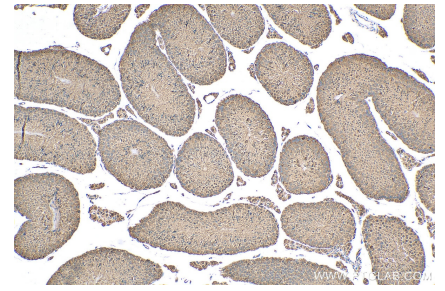
## Selected Validation Data



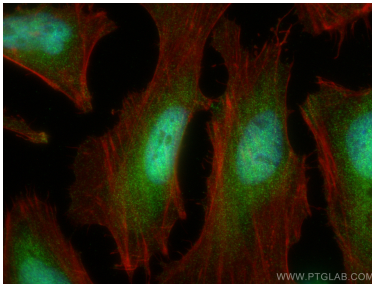
Various lysates were subjected to SDS PAGE followed by western blot with 30580-1-AP (PSMA5 antibody) at dilution of 1:1500 incubated at room temperature for 1.5 hours. This data was developed using the same antibody clone with 30580-1-PBS in a different storage buffer formulation.



WB result of PSMA5 antibody (30580-1-AP; 1:12000; incubated at room temperature for 1.5 hours) with sh-Control and sh-PSMA5 transfected HepG2 cells. This data was developed using the same antibody clone with 30580-1-PBS in a different storage buffer formulation.



Immunohistochemical analysis of paraffin-embedded mouse testis tissue slide using 30580-1-AP (PSMA5 antibody) at dilution of 1:200 (under 10x lens). Heat mediated antigen retrieval with Tris-EDTA buffer (pH 9.0). This data was developed using the same antibody clone with 30580-1-PBS in a different storage buffer formulation.



Immunofluorescent analysis of (4% PFA) fixed HeLa cells using PSMA5 antibody (30580-1-AP) at dilution of 1:400 and CoraLite@488-Conjugated AffiniPure Goat Anti-Rabbit IgG(H+L), CL594-phalloidin (red). This data was developed using the same antibody clone with 30580-1-PBS in a different storage buffer formulation.