

For Research Use Only

MLPH Polyclonal antibody

Catalog Number: 30618-1-AP



Basic Information

Catalog Number: 30618-1-AP	GenBank Accession Number: BC001653	Purification Method: Antigen affinity purification
Size: 150ul , Concentration: 450 µg/ml by Nanodrop;	GeneID (NCBI): 79083	Recommended Dilutions: WB 1:5000-1:50000
Source: Rabbit	Full Name: melanophilin	
Isotype: IgG	Calculated MW: 66 kDa	
Immunogen Catalog Number: AG32931	Observed MW: 66 kDa, 80 kDa	

Applications

Tested Applications: WB, ELISA	Positive Controls:
Species Specificity: Human	WB: A549 cells, HT-29 cells, LNCaP cells, MCF-7 cells, PC-3 cells

Background Information

Melanophilin (Mlph) is a member of the exophilin subfamily of Rab effector proteins. MLPH is a modular protein, forming a ternary complex with the small Ras-related GTPase Rab27A in its GTP-bound form and the motor protein myosin Va. It regulates retention of melanosomes at the peripheral actin cytoskeleton of melanocytes, a process essential for normal mammalian pigmentation. Defects in MLPH are a cause of Griscelli syndrome type 3 (GS3), which is characterized by a silver-gray hair color and abnormal pigment distribution in the hair shaft.

Storage

Storage:
Store at -20°C. Stable for one year after shipment.
Storage Buffer:
PBS with 0.02% sodium azide and 50% glycerol pH 7.3.
Aliquoting is unnecessary for -20°C storage

*** 20ul sizes contain 0.1% BSA

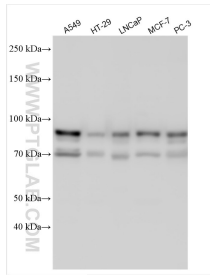
For technical support and original validation data for this product please contact:

T: 1 (888) 4PTGLAB (1-888-478-4522) (toll free
in USA), or 1(312) 455-8498 (outside USA)

E: proteintech@ptglab.com
W: ptglab.com

This product is exclusively available under Proteintech Group brand and is not available to purchase from any other manufacturer.

Selected Validation Data



Various lysates were subjected to SDS PAGE followed by western blot with 30618-1-AP (MLPH antibody) at dilution of 1:10000 incubated at room temperature for 1.5 hours.