

For Research Use Only

LAPTM4A Polyclonal antibody

Catalog Number: 30627-1-AP



Basic Information

Catalog Number: 30627-1-AP	GenBank Accession Number: BC000421	Purification Method: Antigen affinity purification
Size: 150ul , Concentration: 1000 ug/ml by Nanodrop;	GeneID (NCBI): 9741	Recommended Dilutions: WB 1:500-1:2000 IF-P 1:50-1:500
Source: Rabbit	UNIPROT ID: Q15012	
Isotype: IgG	Full Name: lysosomal protein transmembrane 4 alpha	
Immunogen Catalog Number: AG6501	Calculated MW: 27 kDa	
	Observed MW: 70 kDa	

Applications

Tested Applications: WB, IF-P, ELISA	Positive Controls:
Species Specificity: Human, mouse	WB : mouse liver tissue, IF-P : mouse kidney tissue,

Background Information

LAPTM4A is an intracellular membrane protein that regulates the function of organic cation transporter-2 (OCT2) through direct interaction. LAPTM4A can also form a complex with A4GALT in the Golgi and shows at about 70 kDa.

Storage

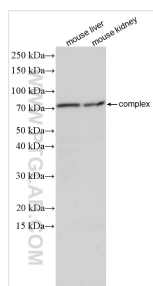
Storage:
Store at -20°C. Stable for one year after shipment.
Storage Buffer:
PBS with 0.02% sodium azide and 50% glycerol pH 7.3.
Aliquoting is unnecessary for -20°C storage

*** 20ul sizes contain 0.1% BSA

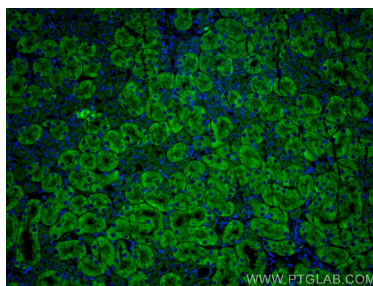
For technical support and original validation data for this product please contact:
T: 1 (888) 4PTGLAB (1-888-478-4522) (toll free in USA), or 1(312) 455-8498 (outside USA)
E: proteintech@ptglab.com
W: ptglab.com

This product is exclusively available under Proteintech Group brand and is not available to purchase from any other manufacturer.

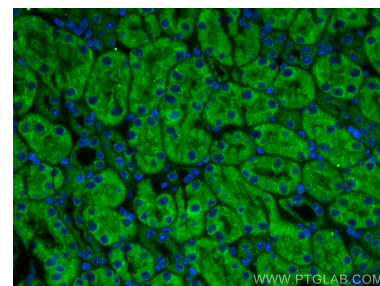
Selected Validation Data



Various lysates were subjected to SDS PAGE followed by western blot with 30627-1-AP (LAPTM4A antibody) at dilution of 1:1000 incubated at room temperature for 1.5 hours.



Immunofluorescent analysis of (4% PFA) fixed mouse kidney tissue using LAPTM4A antibody (30627-1-AP) at dilution of 1:200 and CoraLite®488-Conjugated AffiniPure Goat Anti-Rabbit IgG(H+L).



Immunofluorescent analysis of (4% PFA) fixed mouse kidney tissue using LAPTM4A antibody (30627-1-AP) at dilution of 1:200 and CoraLite®488-Conjugated AffiniPure Goat Anti-Rabbit IgG(H+L).