

For Research Use Only

# SLC25A4 Polyclonal antibody, PBS Only

Catalog Number: 30631-1-PBS



## Basic Information

### Catalog Number:

30631-1-PBS

### Size:

100ug, Concentration: 1 mg/ml by Nanodrop;

### Source:

Rabbit

### Isotype:

IgG

### Immunogen Catalog Number:

AG33385

### GenBank Accession Number:

BC008664

### GeneID (NCBI):

291

### UNIPROT ID:

P12235

### Full Name:

solute carrier family 25 (mitochondrial carrier; adenine nucleotide translocator), member 4

### Calculated MW:

33 kDa

### Observed MW:

33 kDa

### Purification Method:

Antigen affinity purification

## Applications

### Tested Applications:

WB, Indirect ELISA

### Species Specificity:

human, mouse

## Background Information

Adenine nucleotide translocators (ANTs) are mitochondrial carrier proteins that exchange ATP and ADP between the cytoplasm and the mitochondrial matrix. Four isoforms of ANT were identified: ANT1 (encoded by SLC25A4) is highly expressed in different tissues; ANT2 (encoded by SLC25A5) is predominantly expressed in proliferating, regenerating, or undifferentiated cells; ANT3 is ubiquitously expressed; ANT4 is mainly expressed in testis and germ cells. This antibody recognizes both of ANT1 and ANT2.

## Storage

### Storage:

Store at -80°C.

### Storage Buffer:

PBS Only

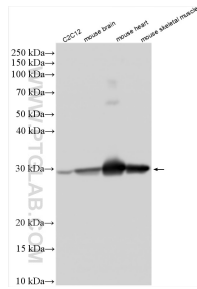
For technical support and original validation data for this product please contact:

T: 1 (888) 4PTGLAB (1-888-478-4522) (toll free in USA), or 1(312) 455-8498 (outside USA)

E: [proteintech@ptglab.com](mailto:proteintech@ptglab.com)  
W: [ptglab.com](http://ptglab.com)

This product is exclusively available under Proteintech Group brand and is not available to purchase from any other manufacturer.

## Selected Validation Data



Various lysates were subjected to SDS PAGE followed by western blot with 30631-1-AP (SLC25A4 antibody) at dilution of 1:1500 incubated at room temperature for 1.5 hours. This data was developed using the same antibody clone with 30631-1-PBS in a different storage buffer formulation.