

For Research Use Only

ASC/TMS1 Polyclonal antibody

Catalog Number: 30641-1-AP

3 Publications



Basic Information

Catalog Number:

30641-1-AP

Size:

150ul, Concentration: 600 ug/ml by Nanodrop;

Source:

Rabbit

Isotype:

IgG

Immunogen Catalog Number:

AG32519

GenBank Accession Number:

NM_023258

GeneID (NCBI):

66824

UNIPROT ID:

Q9EPB4

Full Name:

PYD and CARD domain containing

Calculated MW:

21KD

Observed MW:

21-25 kDa

Purification Method:

Antigen affinity purification

Recommended Dilutions:

WB 1:5000-1:50000

IF/ICC 1:200-1:800

Applications

Tested Applications:

WB, IF/ICC, ELISA

Cited Applications:

WB

Species Specificity:

mouse, rat

Cited Species:

human, mouse

Positive Controls:

WB : mouse spleen tissue, mouse thymus tissue, rat spleen tissue, rat thymus tissue

IF/ICC : MCF-7 cells,

Background Information

PYCARD (PYD and CARD domain containing), also known as ASC and CARD5. The calculated molecular weight of PYCARD is 21 kDa. It is located in cytosol, extracellular region and nucleus. PYCARD is also expressed in several structures, including alimentary system; brain; heart; hemolymphoid system gland; and urinary system. The gene enables identical protein binding activity and protein dimerization activity. Involved in several processes, including activation of cysteine-type endopeptidase activity; positive regulation of cytokine production; and regulation of defense response. It acts upstream of or within several processes, including defense response to Gram-positive bacterium; positive regulation of macromolecule metabolic process; and regulation of autophagy. It is also a part of inflammasome complex. Finally, it orthologous to human PYCARD (PYD and CARD domain containing).

Notable Publications

Author	Pubmed ID	Journal	Application
Fen Wang	39987774	Tissue Cell	WB
Hao Wang	39642564	Int Immunopharmacol	WB
Bangyuan Zhou	39220309	Food Sci Biotechnol	WB

Storage

Storage:

Store at -20°C. Stable for one year after shipment.

Storage Buffer:

PBS with 0.02% sodium azide and 50% glycerol, pH7.3

Aliquoting is unnecessary for -20°C storage

*** 20ul sizes contain 0.1% BSA

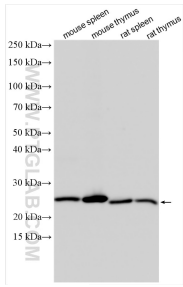
For technical support and original validation data for this product please contact:

T: 1 (888) 4PTGLAB (1-888-478-4522) (toll free in USA), or 1(312) 455-8498 (outside USA)

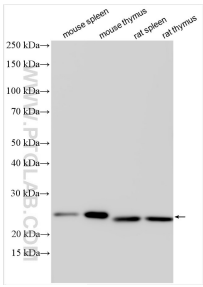
E: proteintech@ptglab.com
W: ptglab.com

This product is exclusively available under Proteintech Group brand and is not available to purchase from any other manufacturer.

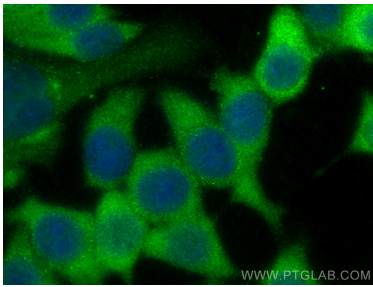
Selected Validation Data



Various lysates were subjected to SDS PAGE followed by western blot with 30641-1-AP (PYCARD antibody) at dilution of 1:10000 incubated at room temperature for 1.5 hours.



Various lysates were subjected to SDS PAGE followed by western blot with 30641-1-AP (PYCARD antibody) at dilution of 1:6000 incubated at room temperature for 1.5 hours.



Immunofluorescent analysis of (-20°C Methanol) fixed MCF-7 cells using PYCARD antibody (30641-1-AP) at dilution of 1:400 and Multi-rAb CoraLite® Plus 488-Goat Anti-Rabbit Recombinant Secondary Antibody (H+L) (RGAR002).