

For Research Use Only

MMP25 Polyclonal antibody

Catalog Number: 30655-1-AP



Basic Information

Catalog Number: 30655-1-AP	GenBank Accession Number: NM_022468	Purification Method: Antigen affinity purification
Size: 150ul , Concentration: 350 ug/ml by Nanodrop;	GeneID (NCBI): 64386	Recommended Dilutions: WB 1:500-1:1000
Source: Rabbit	UNIPROT ID: Q9NPA2	IHC 1:50-1:500
Isotype: IgG	Full Name: matrix metalloproteinase 25	IF/ICC 1:200-1:800
Immunogen Catalog Number: AG29304	Calculated MW: 63 kDa	
	Observed MW: 38-40 kDa	

Applications

Tested Applications: WB, IHC, IF/ICC, ELISA	Positive Controls:
Species Specificity: human, mouse	WB : HT-29 cells, Jurkat cells
Note-IHC: suggested antigen retrieval with TE buffer pH 9.0; (*) Alternatively, antigen retrieval may be performed with citrate buffer pH 6.0	IHC : mouse spleen tissue,
	IF/ICC : A549 cells,

Background Information

MMP25, also known as MT6-MMP, is one of the two glycosylphosphatidylinositol anchored matrix metalloproteinases (MMPs) that have been suggested to play a role in pericellular proteolysis. MMP25 was originally cloned from human leukocytes and its mRNA is predominantly expressed in leukocytes (polymorphonuclear cells and monocytes) of normal tissues and in brain, colon, urothelial and prostate cancers (PMID: 17513868). MMP-25 can exaggerate inflammatory responses by inactivating the main antiproteinase, a1-proteinase inhibitor or serpin (PMID: 16584348). The band at 57-kDa we detected is likely to be active MT6-MMP and minor MT6-MMP degradation product of 38-kDa.

Storage

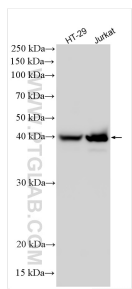
Storage:
Store at -20°C. Stable for one year after shipment.
Storage Buffer:
PBS with 0.02% sodium azide and 50% glycerol pH 7.3.
Aliquoting is unnecessary for -20°C storage

*** 20ul sizes contain 0.1% BSA

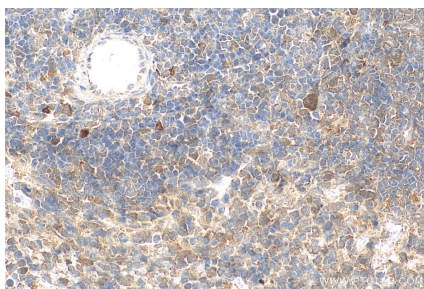
For technical support and original validation data for this product please contact:
T: 1 (888) 4PTGLAB (1-888-478-4522) (toll free in USA), or 1(312) 455-8498 (outside USA)
E: proteintech@ptglab.com
W: ptglab.com

This product is exclusively available under Proteintech Group brand and is not available to purchase from any other manufacturer.

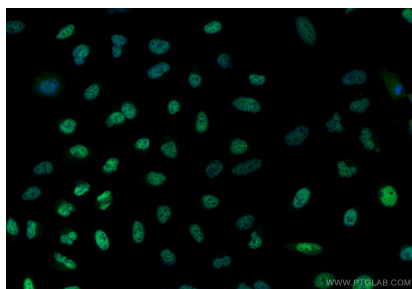
Selected Validation Data



Various lysates were subjected to SDS PAGE followed by western blot with 30655-1-AP (MMP25 antibody) at dilution of 1:600 incubated at room temperature for 1.5 hours.



Immunohistochemical analysis of paraffin-embedded mouse spleen tissue slide using 30655-1-AP (MMP25 antibody) at dilution of 1:200 (under 40x lens). Heat mediated antigen retrieval with Tris-EDTA buffer (pH 9.0).



Immunofluorescent analysis of (4% PFA) fixed A549 cells using MMP25 antibody (30655-1-AP) at dilution of 1:400 and Multi-rAb CoraLite® Plus 488-Goat Anti-Rabbit Recombinant Secondary Antibody (H+L) (RGAR002).