

For Research Use Only

MMP25 Polyclonal antibody, PBS Only

Catalog Number:30655-1-PBS



Basic Information

Catalog Number:

30655-1-PBS

Size:

100ug , Concentration: 1 mg/ml by Nanodrop;

Source:

Rabbit

Isotype:

IgG

Immunogen Catalog Number:

AG29304

GenBank Accession Number:

NM_022468

GeneID (NCBI):

64386

UNIPROT ID:

Q9NPA2

Full Name:

matrix metalloproteinase 25

Calculated MW:

63 kDa

Observed MW:

38-40 kDa

Purification Method:

Antigen affinity purification

Applications

Tested Applications:

WB, IHC, IF/ICC, Indirect ELISA

Species Specificity:

human, mouse

Background Information

MMP25, also known as MT6-MMP, is one of the two glycosylphosphatidylinositol anchored matrix metalloproteinases (MMPs) that have been suggested to play a role in pericellular proteolysis. MMP25 was originally cloned from human leukocytes and its mRNA is predominantly expressed in leukocytes (polymorphonuclear cells and monocytes) of normal tissues and in brain, colon, urothelial and prostate cancers (PMID: 17513868). MMP-25 can exaggerate inflammatory responses by inactivating the main antiproteinase, a1-proteinase inhibitor or serpin (PMID: 16584348). The band at 57-kDa we detected is likely to be active MT6-MMP and minor MT6-MMP degradation product of 38-kDa.

Storage

Storage:

Store at -80°C.

Storage Buffer:

PBS Only

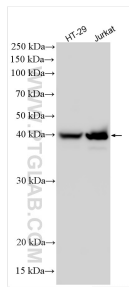
For technical support and original validation data for this product please contact:

T: 1 (888) 4PTGLAB (1-888-478-4522) (toll free in USA), or 1(312) 455-8498 (outside USA)

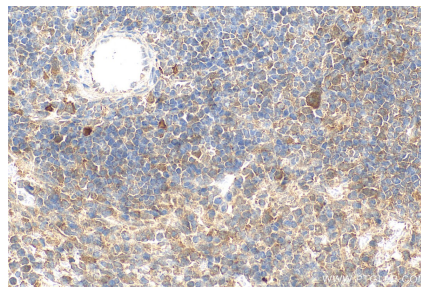
E: proteintech@ptglab.com
W: ptglab.com

This product is exclusively available under Proteintech Group brand and is not available to purchase from any other manufacturer.

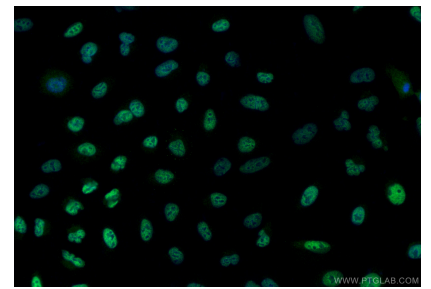
Selected Validation Data



Various lysates were subjected to SDS PAGE followed by western blot with 30655-1-AP (MMP25 antibody) at dilution of 1:600 incubated at room temperature for 1.5 hours. This data was developed using the same antibody clone with 30655-1-PBS in a different storage buffer formulation.



Immunohistochemical analysis of paraffin-embedded mouse spleen tissue slide using 30655-1-AP (MMP25 antibody) at dilution of 1:200 (under 40x lens). Heat mediated antigen retrieval with Tris-EDTA buffer (pH 9.0). This data was developed using the same antibody clone with 30655-1-PBS in a different storage buffer formulation.



Immunofluorescent analysis of (4% PFA) fixed A549 cells using MMP25 antibody (30655-1-AP) at dilution of 1:400 and Multi-rAb CoraLite @ Plus 488-Goat Anti-Rabbit Recombinant Secondary Antibody (H+L) (RGAR002). This data was developed using the same antibody clone with 30655-1-PBS in a different storage buffer formulation.