

For Research Use Only

PHEX Polyclonal antibody

Catalog Number: 30668-1-AP **1 Publications**



Basic Information

Catalog Number: 30668-1-AP	GenBank Accession Number: BC105059	Purification Method: Antigen affinity purification
Size: 150ul , Concentration: 450 ug/ml by Nanodrop;	GeneID (NCBI): 5251	Recommended Dilutions: WB: 1:500-1:2000
Source: Rabbit	UNIPROT ID: P78562	
Isotype: IgG	Full Name: phosphate regulating endopeptidase homolog, X-linked	
Immunogen Catalog Number: AG33428	Calculated MW: 749 aa, 86 kDa	
	Observed MW: 76-80 kDa, 95-100 kDa	

Applications

Tested Applications: WB, ELISA	Positive Controls: WB : CHO cells, ROS1728 cells, mouse brain tissue
Cited Applications: WB	
Species Specificity: human, mouse, rat, hamster	
Cited Species: mouse	

Background Information

Phex encodes a 100- to 105-kDa transmembrane glycoprotein, which is present in bones and teeth of normal mice but not Hyp animals. Phex protein expression in femur and calvaria decreases with age, high levels of Phex detected in osteocytes make this protein an interesting marker to study the later stages of osteoblastic cell differentiation (PMID: 10934642). The 76 kDa represents the deglycosylated core-glycosylated forms within the ERs, the 95 kDa represents the core-glycosylated and unmaturing form within the ERs, the 105 kDa species of PHEX protein represents the fully processed, matured form (PMID: 3251189, 35654784).

Notable Publications

Author	Pubmed ID	Journal	Application
Huixiao Wu	41172247	Adv Sci (Weinh)	WB

Storage

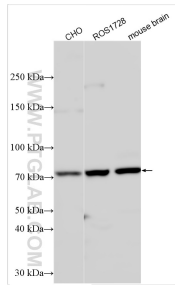
Storage:
Store at -20°C. Stable for one year after shipment.
Storage Buffer:
PBS with 0.02% sodium azide and 50% glycerol, pH7.3
Aliquoting is unnecessary for -20°C storage

***** 20ul sizes contain 0.1% BSA**

For technical support and original validation data for this product please contact:
T: 1 (888) 4PTGLAB (1-888-478-4522) (toll free in USA), or 1(312) 455-8498 (outside USA)
E: proteintech@ptglab.com
W: ptglab.com

This product is exclusively available under Proteintech Group brand and is not available to purchase from any other manufacturer.

Selected Validation Data



Various lysates were subjected to SDS PAGE followed by western blot with 30668-1-AP (PHEX antibody) at dilution of 1:1000 incubated at room temperature for 1.5 hours.