

For Research Use Only

REPS2 Polyclonal antibody

Catalog Number: 30670-1-AP



Basic Information

Catalog Number: 30670-1-AP	GenBank Accession Number: NM_004726	Purification Method: Antigen affinity purification
Size: 150ul , Concentration: 600 ug/ml by Nanodrop;	GeneID (NCBI): 9185	Recommended Dilutions: WB 1:1000-1:5000
Source: Rabbit	UNIPROT ID: Q8NFH8	
Isotype: IgG	Full Name: RALBP1 associated Eps domain containing 2	
Immunogen Catalog Number: AG33764	Calculated MW: 72KD	
	Observed MW: 58 kDa, 78 kDa	

Applications

Tested Applications: WB, ELISA	Positive Controls: WB : T-47D cells, LNCaP cells
Species Specificity: Human	

Background Information

REPS2 is part of a protein complex that regulates the endocytosis of growth factor receptors. The encoded protein directly interacts with a GTPase activating protein that functions downstream of the small G protein Ral. Its expression can negatively affect receptor internalization and inhibit growth factor signaling. There are 4 isoforms of the protein with two short (58 kDa) isoforms comprising 521 or 522 amino acid residues and two long (78 kDa) ones of 659 or 660 residues.

Storage

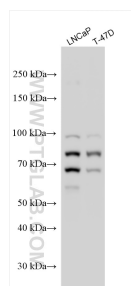
Storage:
Store at -20°C. Stable for one year after shipment.
Storage Buffer:
PBS with 0.02% sodium azide and 50% glycerol pH 7.3.
Aliquoting is unnecessary for -20°C storage

*** 20ul sizes contain 0.1%BSA

For technical support and original validation data for this product please contact:
T: 1 (888) 4PTGLAB (1-888-478-4522) (toll free in USA), or 1(312) 455-8498 (outside USA)
E: proteintech@ptglab.com
W: ptglab.com

This product is exclusively available under Proteintech Group brand and is not available to purchase from any other manufacturer.

Selected Validation Data



Various lysates were subjected to SDS PAGE followed by western blot with 30670-1-AP (REPS2 antibody) at dilution of 1:2500 incubated at room temperature for 1.5 hours.