

PITRM1 Polyclonal antibody

Catalog Number: 30674-1-AP

Basic Information

Catalog Number: 30674-1-AP	GenBank Accession Number: BC001150	Purification Method: Antigen affinity purification
Size: 150ul , Concentration: 400 ug/ml by Nanodrop;	GeneID (NCBI): 10531	Recommended Dilutions: WB 1:2000-1:12000 IHC 1:300-1:1200
Source: Rabbit	UNIPROT ID: Q5JRX3	
Isotype: IgG	Full Name: pitrilysin metalloproteinase 1	
Immunogen Catalog Number: AG30478	Calculated MW: 60 kDa, 117 kDa	
	Observed MW: 110-120 kDa	

Applications

Tested Applications: WB, IHC, ELISA	Positive Controls:
Species Specificity: Human	WB : A549 cells, HeLa cells, human placenta tissue
Note-IHC: suggested antigen retrieval with TE buffer pH 9.0; (*) Alternatively, antigen retrieval may be performed with citrate buffer pH 6.0	IHC : human breast cancer tissue,

Background Information

PITRM1 (Presequence protease, mitochondrial) is a ATP-independent protease that degrades mitochondrial transit peptides after their cleavage. It is specific for peptides in the range of 10 to 65 residues and able to degrade amyloid beta A4 (APP) protein when it accumulates in mitochondrion, suggesting a link with Alzheimer disease. It shows a preference for cleavage after small polar residues and before basic residues, but without any positional preference (PMID:16849325). This protein has a calculated molecular mass of 117kD and it is expressed widely.

Storage

Storage:
Store at -20°C. Stable for one year after shipment.

Storage Buffer:
PBS with 0.02% sodium azide and 50% glycerol pH 7.3.

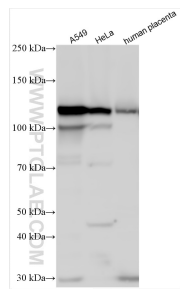
Aliquoting is unnecessary for -20°C storage

*** 20ul sizes contain 0.1% BSA

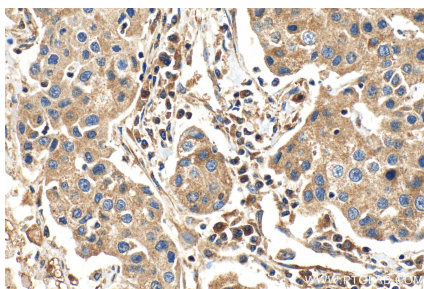
For technical support and original validation data for this product please contact:
 T: 1 (888) 4PTGLAB (1-888-478-4522) (toll free in USA), or 1(312) 455-8498 (outside USA)
 E: proteintech@ptglab.com
 W: ptglab.com

This product is exclusively available under Proteintech Group brand and is not available to purchase from any other manufacturer.

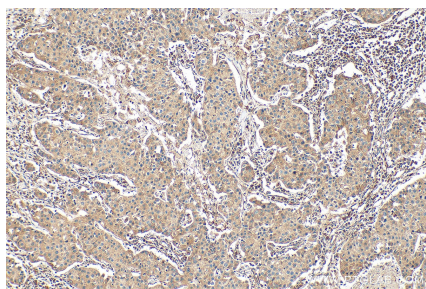
Selected Validation Data



Various lysates were subjected to SDS PAGE followed by western blot with 30674-1-AP (PITRM1 antibody) at dilution of 1:6000 incubated at room temperature for 1.5 hours.



Immunohistochemical analysis of paraffin-embedded human breast cancer tissue slide using 30674-1-AP (PITRM1 antibody) at dilution of 1:600 (under 40x lens). Heat mediated antigen retrieval with Tris-EDTA buffer (pH 9.0).



Immunohistochemical analysis of paraffin-embedded human breast cancer tissue slide using 30674-1-AP (PITRM1 antibody) at dilution of 1:600 (under 10x lens). Heat mediated antigen retrieval with Tris-EDTA buffer (pH 9.0).