

For Research Use Only

Lipoprotein(a) Polyclonal antibody

Catalog Number: 30675-1-AP



Basic Information

Catalog Number: 30675-1-AP	GenBank Accession Number: NM_005577	Purification Method: Antigen affinity purification
Size: 150ul , Concentration: 400 ug/ml by Nanodrop;	GeneID (NCBI): 4018	Recommended Dilutions: IHC 1:50-1:500 IF/ICC 1:50-1:500
Source: Rabbit	UNIPROT ID: P08519	
Isotype: IgG	Full Name: lipoprotein, Lp(a)	
Immunogen Catalog Number: AG32907	Calculated MW: 501 kDa	
	Observed MW: 501 kDa	

Applications

Tested Applications: IHC, IF/ICC, ELISA	Positive Controls: IHC : human placenta tissue, IF/ICC : HepG2 cells,
Species Specificity: human	
Note-IHC: suggested antigen retrieval with TE buffer pH 9.0; (*) Alternatively, antigen retrieval may be performed with citrate buffer pH 6.0	

Background Information

Lipoprotein(a), also known as Lp(a). The plasma concentration of human lipoprotein(a) is correlated with the risk of heart disease. A distinct feature of the Lp(a) particle is the apolipoprotein (a), which is associated with apoB-100, the main protein component of low-density lipoprotein. It is reported that apo(a), which has extensive homology to plasminogen, binds to immobilized fibronectin (PMID: 2531657). The binding of Lp(a) was localized to the C-terminal heparin-binding domain of fibronectin. It is enriched in liver tissue. The N-glycans are complex biantennary structures present in either a mono- or disialylated state.

Storage

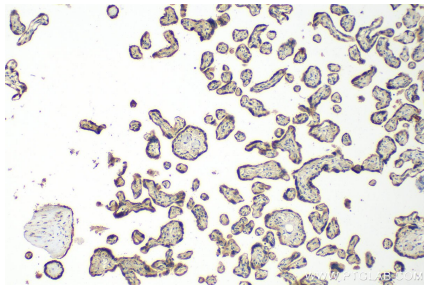
Storage:
Store at -20°C. Stable for one year after shipment.
Storage Buffer:
PBS with 0.02% sodium azide and 50% glycerol pH 7.3.
Aliquoting is unnecessary for -20°C storage

*** 20ul sizes contain 0.1% BSA

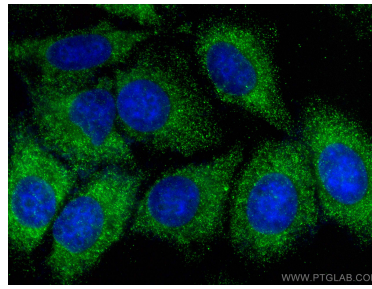
For technical support and original validation data for this product please contact:
T: 1 (888) 4PTGLAB (1-888-478-4522) (toll free in USA), or 1(312) 455-8498 (outside USA)
E: proteintech@ptglab.com
W: ptglab.com

This product is exclusively available under Proteintech Group brand and is not available to purchase from any other manufacturer.

Selected Validation Data



Immunohistochemical analysis of paraffin-embedded human placenta tissue slide using 30675-1-AP (Lipoprotein(a) antibody) at dilution of 1:200 (under 10x lens). Heat mediated antigen retrieval with Tris-EDTA buffer (pH 9.0).



Immunofluorescent analysis of (-20°C Ethanol) fixed HepG2 cells using Lipoprotein(a) antibody (30675-1-AP) at dilution of 1:200 and CoraLite®488-Conjugated AffiniPure Goat Anti-Rabbit IgG(H+L).