

For Research Use Only

# Lipoprotein(a) Polyclonal antibody, PBS Only

Catalog Number:30675-1-PBS



## Basic Information

<b>Catalog Number:</b> 30675-1-PBS	<b>GenBank Accession Number:</b> NM_005577	<b>Purification Method:</b> Antigen affinity purification
<b>Size:</b> 100ug , Concentration: 1 mg/ml by Nanodrop;	<b>GeneID (NCBI):</b> 4018	
<b>Source:</b> Rabbit	<b>UNIPROT ID:</b> P08519	
<b>Isotype:</b> IgG	<b>Full Name:</b> lipoprotein, Lp(a)	
<b>Immunogen Catalog Number:</b> AG32907	<b>Calculated MW:</b> 501 kDa	
	<b>Observed MW:</b> 501 kDa	

## Applications

**Tested Applications:**  
IHC, IF/ICC, Indirect ELISA

**Species Specificity:**  
human

## Background Information

Lipoprotein(a), also known as Lp(a). The plasma concentration of human lipoprotein(a) is correlated with the risk of heart disease. A distinct feature of the Lp(a) particle is the apolipoprotein (a), which is associated with apoB-100, the main protein component of low-density lipoprotein. It is reported that apo(a), which has extensive homology to plasminogen, binds to immobilized fibronectin (PMID: 2531657). The binding of Lp(a) was localized to the C-terminal heparin-binding domain of fibronectin. It is enriched in liver tissue. The N-glycans are complex biantennary structures present in either a mono- or disialylated state.

## Storage

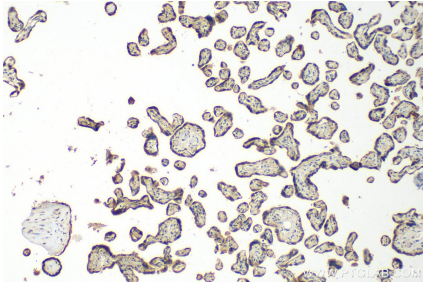
**Storage:**  
Store at -80°C.

**Storage Buffer:**  
PBS Only

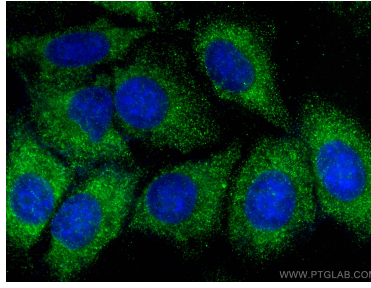
For technical support and original validation data for this product please contact:  
T: 1 (888) 4PTGLAB (1-888-478-4522) (toll free in USA), or 1(312) 455-8498 (outside USA)      E: proteintech@ptglab.com  
W: ptglab.com

**This product is exclusively available under Proteintech Group brand and is not available to purchase from any other manufacturer.**

## Selected Validation Data



Immunohistochemical analysis of paraffin-embedded human placenta tissue slide using 30675-1-AP (Lipoprotein(a) antibody) at dilution of 1:200 (under 10x lens). Heat mediated antigen retrieval with Tris-EDTA buffer (pH 9.0). This data was developed using the same antibody clone with 30675-1-PBS in a different storage buffer formulation.



Immunofluorescent analysis of (-20°C Ethanol) fixed HepG2 cells using Lipoprotein(a) antibody (30675-1-AP) at dilution of 1:200 and CoraLite®488-Conjugated AffiniPure Goat Anti-Rabbit IgG(H+L). This data was developed using the same antibody clone with 30675-1-PBS in a different storage buffer formulation.