

For Research Use Only

# Gsdmd Polyclonal antibody

Catalog Number:30695-1-AP



## Basic Information

<b>Catalog Number:</b> 30695-1-AP	<b>GenBank Accession Number:</b> BC029813	<b>Purification Method:</b> Antigen affinity purification
<b>Size:</b> 150ul , Concentration: 750 µg/ml by Nanodrop;	<b>GeneID (NCBI):</b> 69146	<b>Recommended Dilutions:</b> WB 1:2000-1:12000
<b>Source:</b> Rabbit	<b>Full Name:</b> gasdermin D	
<b>Isotype:</b> IgG	<b>Calculated MW:</b> 53 kDa	
<b>Immunogen Catalog Number:</b> AG33609	<b>Observed MW:</b> 50-53 kDa	

## Applications

<b>Tested Applications:</b> WB, ELISA	<b>Positive Controls:</b> WB : EL-4 cells, EL-4-B5 cells, NIH/3T3 cells, mouse liver tissue
<b>Species Specificity:</b> mouse	

## Background Information

GSDMD is a member of the gasdermin family. Members of this family appear to play a role in regulation of epithelial proliferation. GSDMD has been suggested to act as a tumor suppressor. Recently, GSDMD is identified as a new component of inflammasomes, and it is an executor of pyroptosis and required for interleukin-1 $\beta$  secretion. Cleavage of GSDMD by inflammatory caspases determines pyroptotic cell death.

## Storage

**Storage:**  
Store at -20°C. Stable for one year after shipment.  
**Storage Buffer:**  
PBS with 0.02% sodium azide and 50% glycerol pH 7.3.  
Aliquoting is unnecessary for -20°C storage

\*\*\* 20ul sizes contain 0.1% BSA

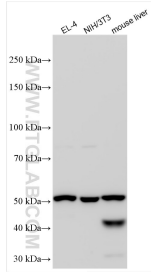
For technical support and original validation data for this product please contact:

T: 1 (888) 4PTGLAB (1-888-478-4522) (toll free in USA), or 1(312) 455-8498 (outside USA)

E: [proteintech@ptglab.com](mailto:proteintech@ptglab.com)  
W: [ptglab.com](http://ptglab.com)

This product is exclusively available under Proteintech Group brand and is not available to purchase from any other manufacturer.

## Selected Validation Data



Various lysates were subjected to SDS PAGE followed by western blot with 30695-1-AP (Gsdmd antibody) at dilution of 1:6000 incubated at room temperature for 1.5 hours.