

For Research Use Only

# LHX8 Polyclonal antibody, PBS Only

Catalog Number: 30722-1-PBS



## Basic Information

<b>Catalog Number:</b> 30722-1-PBS	<b>GenBank Accession Number:</b> BC040321	<b>Purification Method:</b> Antigen affinity purification
<b>Size:</b> 100ug, Concentration: 1 mg/ml by Nanodrop;	<b>GeneID (NCBI):</b> 431707	
<b>Source:</b> Rabbit	<b>UNIPROT ID:</b> Q68G74	
<b>Isotype:</b> IgG	<b>Full Name:</b> LIM homeobox 8	
<b>Immunogen Catalog Number:</b> AG33787	<b>Calculated MW:</b> 39 kDa	
	<b>Observed MW:</b> 39-44 kDa	

## Applications

**Tested Applications:**  
WB, IF/ICC, Indirect ELISA

**Species Specificity:**  
human

## Background Information

LHX8 (LIM homeobox 8), also known as LHX7. It is expected to be located in nucleus and mainly expressed in brain, lymphoid tissue, salivary gland. The calculated molecular weight of METAP1 is 39 kDa. The protein encoded by this gene is a member of the LIM homeobox family of proteins, which are involved in patterning and differentiation of various tissue types. These proteins contain two tandemly repeated cysteine-rich double-zinc finger motifs known as LIM domains, in addition to a DNA-binding homeodomain. It is also involved in oogenesis and in neuronal differentiation. LHX8 is a candidate gene for cleft palate, and it is also associated with odontoma formation (PMID: 34112263).

## Storage

**Storage:**  
Store at -80°C.

**Storage Buffer:**  
PBS Only

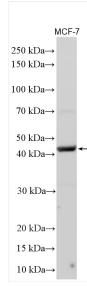
For technical support and original validation data for this product please contact:

T: 1 (888) 4PTGLAB (1-888-478-4522) (toll free in USA), or 1(312) 455-8498 (outside USA)

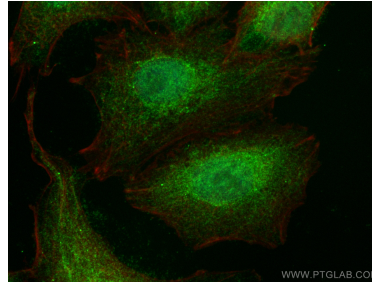
E: [proteintech@ptglab.com](mailto:proteintech@ptglab.com)  
W: [ptglab.com](http://ptglab.com)

**This product is exclusively available under Proteintech Group brand and is not available to purchase from any other manufacturer.**

## Selected Validation Data



Various lysates were subjected to SDS PAGE followed by western blot with 30722-1-AP (LHX8 antibody) at dilution of 1:2000 incubated at room temperature for 1.5 hours. This data was developed using the same antibody clone with 30722-1-PBS in a different storage buffer formulation.



Immunofluorescent analysis of (4% PFA) fixed A549 cells using LHX8 antibody (30722-1-AP) at dilution of 1:400 and Coralite@488-Conjugated AffiniPure Goat Anti-Rabbit IgG(H+L) (SA00013-2), CL594-Phalloidin (red). This data was developed using the same antibody clone with 30722-1-PBS in a different storage buffer formulation.