

For Research Use Only

# SHLD3 Polyclonal antibody

Catalog Number: 30735-1-AP



## Basic Information

<b>Catalog Number:</b> 30735-1-AP	<b>GenBank Accession Number:</b> GeneID (NCBI): 112441434	<b>Purification Method:</b> Antigen affinity purification
<b>Size:</b> 150ul , Concentration: 350 ug/ml by Nanodrop;	<b>UNIPROT ID:</b> Q6ZNX1	<b>Recommended Dilutions:</b> WB 1:500-1:2000
<b>Source:</b> Rabbit	<b>Full Name:</b> SHLD3	
<b>Isotype:</b> IgG	<b>Calculated MW:</b> 29 kDa	
<b>Immunogen Catalog Number:</b> AG32940	<b>Observed MW:</b> 28-70 kDa	

## Applications

<b>Tested Applications:</b> WB, ELISA	<b>Positive Controls:</b> WB : HeLa cells, mouse ovary tissue
<b>Species Specificity:</b> Human, mouse	

## Background Information

SHLD3 (shieldin complex subunit 3), also known as RINN1 or CTC-534A2.2. It is located in Chromosome and expressed in monocyte. The gene is a component of the shieldin complex, which plays an important role in repair of DNA double-stranded breaks (DSBs). It has been found that the proper function of MAD2L2 in shieldin requires its dimerization, and the interaction between MAD2L2 and SHLD3 is mediated and accelerated by SHLD2. The dimerization defect MAD2L2 damages the assembly of shieldin and cannot promote the NHEJ. In addition, the dimerization of MAD2L2 and the existence of SHLD3 allow shieldin to interact with TRIP13 ATPase (PMID: 34521823). The calculated molecular weight of SHLD3 is 28 kDa, the antibody can recognize the 70kDa band, which may be related to the interaction between MAD2L2 and SHLD3 as a dimer in shieldin complex.

## Storage

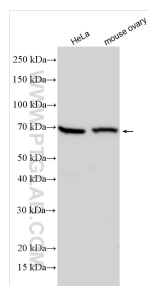
**Storage:**  
Store at -20°C. Stable for one year after shipment.  
**Storage Buffer:**  
PBS with 0.02% sodium azide and 50% glycerol pH 7.3.  
Aliquoting is unnecessary for -20°C storage

\*\*\* 20ul sizes contain 0.1%BSA

For technical support and original validation data for this product please contact:  
T: 1 (888) 4PTGLAB (1-888-478-4522) (toll free in USA), or 1(312) 455-8498 (outside USA)  
E: [proteintech@ptglab.com](mailto:proteintech@ptglab.com)  
W: [ptglab.com](http://ptglab.com)

This product is exclusively available under Proteintech Group brand and is not available to purchase from any other manufacturer.

## Selected Validation Data



Various lysates were subjected to SDS PAGE followed by western blot with 30735-1-AP (SHLD3 antibody) at dilution of 1:1000 incubated at room temperature for 1.5 hours.