

For Research Use Only

# PTPRM/RPTPmu Polyclonal antibody

Catalog Number:30763-1-AP



## Basic Information

<b>Catalog Number:</b> 30763-1-AP	<b>GenBank Accession Number:</b> NM_002845	<b>Purification Method:</b> Antigen affinity purification
<b>Size:</b> 150ul , Concentration: 500 ug/ml by Nanodrop;	<b>GeneID (NCBI):</b> 5797	<b>Recommended Dilutions:</b> WB: 1:500-1:3000
<b>Source:</b> Rabbit	<b>UNIPROT ID:</b> P28827	
<b>Isotype:</b> IgG	<b>Full Name:</b> protein tyrosine phosphatase, receptor type, M	
<b>Immunogen Catalog Number:</b> AG33475	<b>Calculated MW:</b> 164KD	
	<b>Observed MW:</b> 80 kDa, 100 kDa, 200 kDa	

## Applications

<b>Tested Applications:</b> WB, ELISA	<b>Positive Controls:</b> WB : MCF-7 cells, MDA-MB-231 cells, U-87 MG cells, rat eye tissue
<b>Species Specificity:</b> human, rat	

## Background Information

PTPRM, also known as protein tyrosine phosphatase receptor type M or RPTPmu, is a protein with a molecular weight of approximately 155 kDa. It is a receptor-type tyrosine phosphatase involved in cell-cell adhesion, migration, and signaling. It exists in two forms, either a full-length 200 kDa form or as two noncovalently associated fragments of 100 kDa each. Additional unidentified serine proteases cleave PTPμ in GBM cells to yield smaller extracellular fragments with MWs of 78 and 55 kDa (PMID: 25223585).

## Storage

**Storage:**  
Store at -20°C. Stable for one year after shipment.  
**Storage Buffer:**  
PBS with 0.02% sodium azide and 50% glycerol, pH7.3  
Aliquoting is unnecessary for -20°C storage

\*\*\* 20ul sizes contain 0.1% BSA

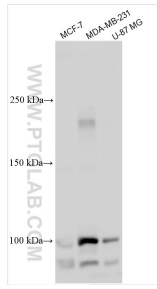
For technical support and original validation data for this product please contact:

T: 1 (888) 4PTGLAB (1-888-478-4522) (toll free in USA), or 1(312) 455-8498 (outside USA)

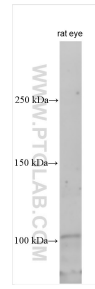
E: proteintech@ptglab.com  
W: ptglab.com

This product is exclusively available under Proteintech Group brand and is not available to purchase from any other manufacturer.

## Selected Validation Data



Various lysates were subjected to SDS PAGE followed by western blot with 30763-1-AP (PTPRM antibody) at dilution of 1:1500 incubated at room temperature for 1.5 hours.



Various lysates were subjected to SDS PAGE followed by western blot with 30763-1-AP (PTPRM antibody) at dilution of 1:1500 incubated at room temperature for 1.5 hours.