

For Research Use Only

# Cyclin E2 Polyclonal antibody

Catalog Number: 30768-1-AP



## Basic Information

### Catalog Number:

30768-1-AP

### Size:

150ul , Concentration: 550 ug/ml by Nanodrop;

### Source:

Rabbit

### Isotype:

IgG

### Immunogen Catalog Number:

AG26029

### GenBank Accession Number:

BC020729

### GeneID (NCBI):

9134

### UNIPROT ID:

O96020

### Full Name:

cyclin E2

### Calculated MW:

374 aa, 44 kDa

### Observed MW:

44 kDa

### Purification Method:

Antigen affinity purification

### Recommended Dilutions:

WB 1:1000-1:4000

## Applications

### Tested Applications:

WB, ELISA

### Species Specificity:

human, mouse, rat

### Positive Controls:

WB : Jurkat cells, NIH/3T3 cells, mouse testis tissue, rat testis tissue

## Background Information

Cyclin E2 (CCNE2) belongs to the highly conserved cyclin family, whose members are characterized by a dramatic periodicity in protein abundance throughout the cell cycle. Cyclins function as regulators of cyclin-dependent kinases (CDKs). Different cyclins exhibit distinct expression and degradation patterns which contribute to the temporal coordination of cell cycle events. CCNE2 forms a complex with and functions as a regulatory subunit of CDK2 and has been shown to specifically interact with CIP/KIP family of CDK inhibitors. CCNE2 plays a role in cell cycle G1/S transition and its expression peaks at the G1-S phase. Whereas cyclin E1 is expressed in most proliferating normal and tumor cells, cyclin E2 levels are low or undetectable in nontransformed cells, and are elevated in tumor-derived cells.

## Storage

### Storage:

Store at -20°C. Stable for one year after shipment.

### Storage Buffer:

PBS with 0.02% sodium azide and 50% glycerol pH 7.3.

Aliquoting is unnecessary for -20°C storage

\*\*\* 20ul sizes contain 0.1% BSA

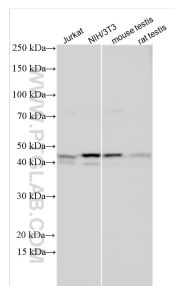
For technical support and original validation data for this product please contact:

T: 1 (888) 4PTGLAB (1-888-478-4522) (toll free in USA), or 1(312) 455-8498 (outside USA)

E: [proteintech@ptglab.com](mailto:proteintech@ptglab.com)  
W: [ptglab.com](http://ptglab.com)

This product is exclusively available under Proteintech Group brand and is not available to purchase from any other manufacturer.

## Selected Validation Data



Various lysates were subjected to SDS PAGE followed by western blot with 30768-1-AP (CCNE2 antibody) at dilution of 1:2000 incubated at room temperature for 1.5 hours.