

For Research Use Only

KIF15 Polyclonal antibody

Catalog Number: 30774-1-AP

Featured Product



Basic Information

Catalog Number:

30774-1-AP

Size:

150ul, Concentration: 700 ug/ml by Nanodrop;

Source:

Rabbit

Isotype:

IgG

Immunogen Catalog Number:

AG33897

GenBank Accession Number:

NM_020242

GeneID (NCBI):

56992

UNIPROT ID:

Q9NS87

Full Name:

kinesin family member 15

Calculated MW:

160 kDa

Observed MW:

145-150 kDa

Purification Method:

Antigen affinity purification

Recommended Dilutions:

WB 1:2000-1:16000

IF/ICC 1:200-1:800

Applications

Tested Applications:

WB, IF/ICC, ELISA

Species Specificity:

human

Positive Controls:

WB : HEK-293 cells, HeLa cells, HepG2 cells, K-562 cells, L02 cells

IF/ICC : HEK-293 cells,

Background Information

KIF15, also named as KLP2 and KNSL7, belongs to the kinesin-like protein family and KLP2 subfamily. It is a plus-end directed kinesin-like motor enzyme which involved in mitotic spindle assembly. It is located in the cytoplasm and biased expression in testis. Several isoforms of KIF15 exist due to the alternative splicing, with molecular weight between 130-160 kDa. Sometimes higher molecular weight around 200 kDa can also be observed, which may be a modified variant of KIF15 (14618103). It is known that KIF15 participates in important events during neuronal development and involves multiple cellular processes such as proliferation, apoptosis, and differentiation. There is emerging evidence indicating that KIF15 plays an important role in several malignancies including pancreatic cancer, hepatocellular carcinoma, and breast cancer (PMID: 33277366).

Storage

Storage:

Store at -20°C. Stable for one year after shipment.

Storage Buffer:

PBS with 0.02% sodium azide and 50% glycerol, pH7.3

Aliquoting is unnecessary for -20°C storage

*** 20ul sizes contain 0.1% BSA

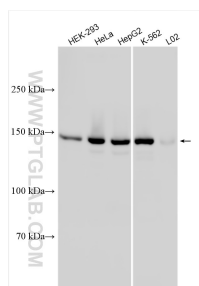
For technical support and original validation data for this product please contact:

T: 1 (888) 4PTGLAB (1-888-478-4522) (toll free in USA), or 1(312) 455-8498 (outside USA)

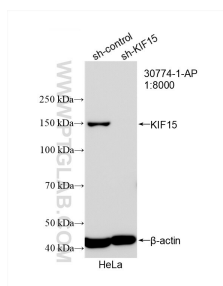
E: proteintech@ptglab.com
W: ptglab.com

This product is exclusively available under Proteintech Group brand and is not available to purchase from any other manufacturer.

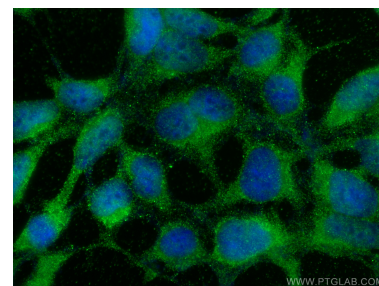
Selected Validation Data



Various lysates were subjected to SDS PAGE followed by western blot with 30774-1-AP (KIF15 antibody) at dilution of 1:8000 incubated at room temperature for 1.5 hours.



WB result of KIF15 antibody (30774-1-AP; 1:8000; incubated at room temperature for 1.5 hours) with sh-Control and sh-KIF15 transfected HeLa cells.



Immunofluorescent analysis of (-20°C Ethanol) fixed HEK-293 cells using KIF15 antibody (30774-1-AP) at dilution of 1:400 and CoraLite®488-Conjugated AffiniPure Goat Anti-Rabbit IgG(H+L).