

For Research Use Only

KIF15 Polyclonal antibody, PBS Only

Catalog Number: 30774-1-PBS **Featured Product**



Basic Information

Catalog Number: 30774-1-PBS	GenBank Accession Number: NM_020242	Purification Method: Antigen affinity purification
Size: 100ug, Concentration: 1 mg/ml by Nanodrop;	GeneID (NCBI): 56992	
Source: Rabbit	UNIPROT ID: Q9NS87	
Isotype: IgG	Full Name: kinesin family member 15	
Immunogen Catalog Number: AG33897	Calculated MW: 160 kDa	
	Observed MW: 145-150 kDa	

Applications

Tested Applications:
WB, IF/ICC, Indirect ELISA

Species Specificity:
human

Background Information

KIF15, also named as KLP2 and KNLS7, belongs to the kinesin-like protein family and KLP2 subfamily. It is a plus-end directed kinesin-like motor enzyme which involved in mitotic spindle assembly. It is located in the cytoplasm and biased expression in testis. Several isoforms of KIF15 exist due to the alternative splicing, with molecular weight between 130-160 kDa. Sometimes higher molecular weight around 200 kDa can also be observed, which may be a modified variant of KIF15 (14618103). It is known that KIF15 participates in important events during neuronal development and involves multiple cellular processes such as proliferation, apoptosis, and differentiation. There is emerging evidence indicating that KIF15 plays an important role in several malignancies including pancreatic cancer, hepatocellular carcinoma, and breast cancer (PMID: 33277366).

Storage

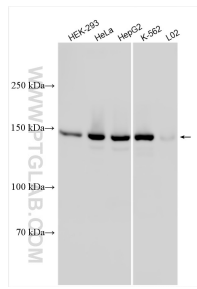
Storage:
Store at -80°C.

Storage Buffer:
PBS only, pH7.3

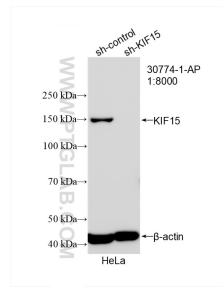
For technical support and original validation data for this product please contact:
T: 1 (888) 4PTGLAB (1-888-478-4522) (toll free in USA), or 1(312) 455-8498 (outside USA) E: proteintech@ptglab.com
W: ptglab.com

This product is exclusively available under Proteintech Group brand and is not available to purchase from any other manufacturer.

Selected Validation Data



Various lysates were subjected to SDS PAGE followed by western blot with 30774-1-AP (KIF15 antibody) at dilution of 1:8000 incubated at room temperature for 1.5 hours. This data was developed using the same antibody clone with 30774-1-PBS in a different storage buffer formulation.



WB result of KIF15 antibody (30774-1-AP; 1:8000; incubated at room temperature for 1.5 hours) with sh-Control and sh-KIF15 transfected HeLa cells. This data was developed using the same antibody clone with 30774-1-PBS in a different storage buffer formulation.