

For Research Use Only

Cathepsin C Polyclonal antibody

Catalog Number:30790-1-AP



Basic Information

Catalog Number: 30790-1-AP	GenBank Accession Number: NM_001814	Purification Method: Antigen affinity purification
Size: 150ul , Concentration: 450 µg/ml by Nanodrop;	GeneID (NCBI): 1075	Recommended Dilutions: WB 1:500-1:1000
Source: Rabbit	Full Name: cathepsin C	
Isotype: IgG	Calculated MW: 52 kDa	
Immunogen Catalog Number: AG32420	Observed MW: 100 kDa	

Applications

Tested Applications: WB, ELISA	Positive Controls: WB : HEK-293T cells,
Species Specificity: Human	

Background Information

Cathepsin C, also known as DPP-I. It is expected to be located in lysosome and highly expressed in lung, kidney and placenta (PMID: 9092576). This gene encodes a member of the peptidase C1 family and lysosomal cysteine proteinase that appears to be a central coordinator for activation of many serine proteinases in cells of the immune system. Alternative splicing results in multiple transcript variants, at least one of which encodes a preproprotein that is proteolytically processed to generate heavy and light chains that form a disulfide-linked dimer. Defects in the encoded protein have been shown to be a cause of Papillon-Lefevre syndrome, an autosomal recessive disorder characterized by palmoplantar keratosis and periodontitis. The calculated molecular weight of Cathepsin C is 51 kDa. The 23-kDa band may be a subunit of the protein monomer, while a 100-kDa band is a dimer form (PMID: 26884336, 31557781).

Storage

Storage:
Store at -20°C. Stable for one year after shipment.
Storage Buffer:
PBS with 0.02% sodium azide and 50% glycerol pH 7.3.
Aliquoting is unnecessary for -20°C storage

*** 20ul sizes contain 0.1% BSA

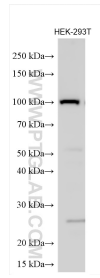
For technical support and original validation data for this product please contact:

T: 1 (888) 4PTGLAB (1-888-478-4522) (toll free in USA), or 1(312) 455-8498 (outside USA)

E: proteintech@ptglab.com
W: ptglab.com

This product is exclusively available under Proteintech Group brand and is not available to purchase from any other manufacturer.

Selected Validation Data



Various lysates were subjected to SDS PAGE followed by western blot with 30790-1-AP (Cathepsin C antibody) at dilution of 1:500 incubated at room temperature for 1.5 hours.