

For Research Use Only

CD300LD Polyclonal antibody

Catalog Number: 30798-1-AP

Featured Product



Basic Information

Catalog Number:

30798-1-AP

Size:

150ul, Concentration: 300 ug/ml by Nanodrop;

Source:

Rabbit

Isotype:

IgG

Immunogen Catalog Number:

AG29307

GenBank Accession Number:

NM_001115152

GeneID (NCBI):

100131439

UNIPROT ID:

Q6UXZ3

Full Name:

CD300 molecule-like family member d

Calculated MW:

22 kDa

Observed MW:

40-43 kDa

Purification Method:

Antigen affinity purification

Recommended Dilutions:

WB 1:500-1:3000

Applications

Tested Applications:

WB, ELISA

Species Specificity:

human

Positive Controls:

WB : A549 cells, MCF-7 cells, HeLa cells

Background Information

CD300LD, also known as CD300D and CMRF35A4, is a member of the CD300 family. The CD300 family of molecules modulates a broad and diverse range of immune cell processes via their paired activating and inhibitory receptor functions. CD300LD is a 194 amino acid single-pass type I membrane protein containing an Ig-like V-type (immunoglobulin-like) domain. The apparent molecular weight is greater than the calculated molecular weight of 22 kDa, probably due to post-translational modification, presumably by glycosylation.

Storage

Storage:

Store at -20°C. Stable for one year after shipment.

Storage Buffer:

PBS with 0.02% sodium azide and 50% glycerol pH 7.3.

Aliquoting is unnecessary for -20°C storage

*** 20ul sizes contain 0.1% BSA

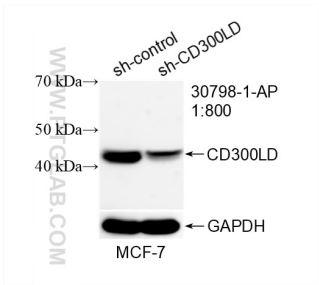
For technical support and original validation data for this product please contact:

T: 1 (888) 4PTGLAB (1-888-478-4522) (toll free in USA), or 1(312) 455-8498 (outside USA)

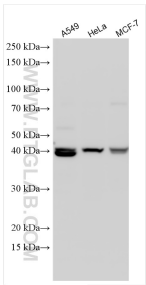
E: proteintech@ptglab.com
W: ptglab.com

This product is exclusively available under Proteintech Group brand and is not available to purchase from any other manufacturer.

Selected Validation Data



WB result of CD300LD antibody (30798-1-AP; 1:800; incubated at room temperature for 1.5 hours) with sh-Control and sh-CD300LD transfected MCF-7 cells.



Various lysates were subjected to SDS PAGE followed by western blot with 30798-1-AP (CD300LD antibody) at dilution of 1:1500 incubated at room temperature for 1.5 hours.