

For Research Use Only

# SLC6A20 Polyclonal antibody

Catalog Number: 30843-1-AP



## Basic Information

**Catalog Number:**

30843-1-AP

**Size:**

150ul , Concentration: 400 µg/ml by Nanodrop;

**Source:**

Rabbit

**Isotype:**

IgG

**Immunogen Catalog Number:**

AG33967

**GenBank Accession Number:**

BC136431

**GeneID (NCBI):**

54716

**UNIPROT ID:**

Q9NP91

**Full Name:**

solute carrier family 6 (proline IMINO transporter), member 20

**Observed MW:**

50-60 kDa

**Purification Method:**

Antigen affinity Purification

**Recommended Dilutions:**

WB 1:500-1:1000

IF-P 1:50-1:500

## Applications

**Tested Applications:**

WB, IF-P, ELISA

**Species Specificity:**

human, mouse, rat

**Positive Controls:**

**WB :** mouse kidney tissue, HEK-293 cells, rat kidney tissue

**IF-P :** mouse brain tissue,

## Background Information

SLC6A20 also known as XT3, SIT1, belongs to the family of solute carrier 6, mediating the transport of neutral amino acids from the extracellular milieu toward cell or storage vesicles utilizing an electric membrane potential as the driving force. SLC6A20 is expressed in the kidney and small intestine and is localized in the brush marginal membrane of the proximal renal tubules (PMID: 16174864). Mutations in SLC6A20 are associated with Hyperglycinuria and Iminoglycinuria (PMID: 19033659)

## Storage

**Storage:**

Store at -20°C. Stable for one year after shipment.

**Storage Buffer:**

PBS with 0.02% sodium azide and 50% glycerol pH 7.3.

Aliquoting is unnecessary for -20°C storage

\*\*\* 20ul sizes contain 0.1% BSA

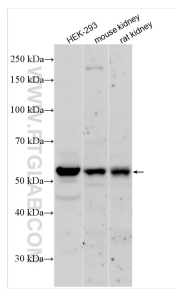
For technical support and original validation data for this product please contact:

T: 1 (888) 4PTGLAB (1-888-478-4522) (toll free in USA), or 1(312) 455-8498 (outside USA)

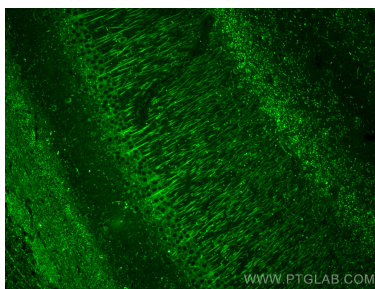
E: [proteintech@ptglab.com](mailto:proteintech@ptglab.com)  
W: [ptglab.com](http://ptglab.com)

This product is exclusively available under Proteintech Group brand and is not available to purchase from any other manufacturer.

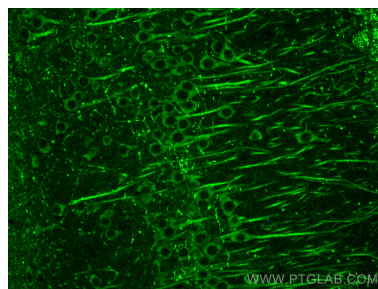
## Selected Validation Data



Various lysates were subjected to SDS PAGE followed by western blot with 30843-1-AP (SLC6A20 antibody) at dilution of 1:800 incubated at room temperature for 1.5 hours.



Immunofluorescent analysis of (4% PFA) fixed paraffin-embedded mouse brain tissue using SLC6A20 antibody (30843-1-AP) at dilution of 1:200 and Multi-rAb CoraLite® Plus 488-Goat Anti-Rabbit Recombinant Secondary Antibody (H+L) (RGAR002). Heat mediated antigen retrieval with Tris-EDTA buffer (pH 9.0).



Immunofluorescent analysis of (4% PFA) fixed paraffin-embedded mouse brain tissue using SLC6A20 antibody (30843-1-AP) at dilution of 1:200 and Multi-rAb CoraLite® Plus 488-Goat Anti-Rabbit Recombinant Secondary Antibody (H+L) (RGAR002). Heat mediated antigen retrieval with Tris-EDTA buffer (pH 9.0).