

For Research Use Only

C19orf63 Polyclonal antibody, PBS Only

Catalog Number: 30844-1-PBS



Basic Information

Catalog Number: 30844-1-PBS	GenBank Accession Number: BC035001	Purification Method: Antigen affinity Purification
Size: 100ug , Concentration: 1 mg/ml by Nanodrop;	GeneID (NCBI): 284361	
Source: Rabbit	UNIPROT ID: Q5UCC4	
Isotype: IgG	Full Name: chromosome 19 open reading frame 63	
Immunogen Catalog Number: AG34064	Observed MW: 28 kDa	

Applications

Tested Applications:
WB, IHC, Indirect ELISA

Species Specificity:
human, mouse

Background Information

EMC10 (Endoplasmic Reticulum Membrane Protein Complex Subunit 10) is one of the key components of the highly conserved endoplasmic reticulum membrane protein complex (EMC). The core function of this complex is to act as an insertase and chaperone in the endoplasmic reticulum, assisting in the correct folding, assembly, and membrane integration of membrane proteins, and preventing the aggregation of misfolded proteins. Studies have shown that EMC10 plays a dual role in cells: within the cell, it ensures the biogenesis of important membrane proteins such as G protein-coupled receptors (GPCRs); moreover, it can be secreted outside the cell (referred to as sEMC10), where it acts as a novel signaling molecule to activate the hypothalamic-pituitary axis, regulating energy metabolism and body weight in the body, and is closely related to obesity and metabolic diseases.

Storage

Storage:
Store at -80°C.

Storage Buffer:
PBS only, pH7.3

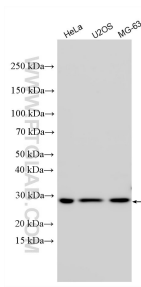
For technical support and original validation data for this product please contact:

T: 1 (888) 4PTGLAB (1-888-478-4522) (toll free in USA), or 1(312) 455-8498 (outside USA)

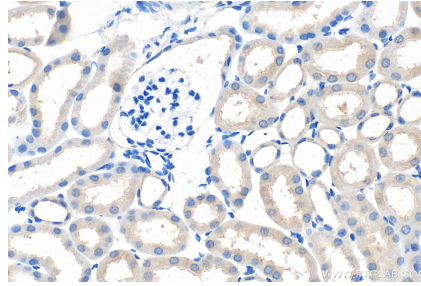
E: proteintech@ptglab.com
W: ptglab.com

This product is exclusively available under Proteintech Group brand and is not available to purchase from any other manufacturer.

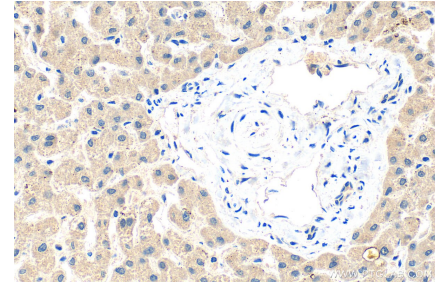
Selected Validation Data



Various lysates were subjected to SDS PAGE followed by western blot with 30844-1-AP (C19orf63 antibody) at dilution of 1:3000 incubated at room temperature for 1.5 hours. This data was developed using the same antibody clone with 30844-1-PBS in a different storage buffer formulation.



Immunohistochemical analysis of paraffin-embedded mouse kidney tissue slide using 30844-1-AP (C19orf63 antibody) at dilution of 1:400 (under 40x lens). Heat mediated antigen retrieval with Tris-EDTA buffer (pH 9.0). This data was developed using the same antibody clone with 30844-1-PBS in a different storage buffer formulation.



Immunohistochemical analysis of paraffin-embedded human liver tissue slide using 30844-1-AP (C19orf63 antibody) at dilution of 1:400 (under 40x lens). Heat mediated antigen retrieval with Tris-EDTA buffer (pH 9.0). This data was developed using the same antibody clone with 30844-1-PBS in a different storage buffer formulation.