

For Research Use Only

# SGLT1 Polyclonal antibody

Catalog Number: 30861-1-AP

2 Publications



## Basic Information

Catalog Number:

30861-1-AP

Size:

150ul, Concentration: 450 ug/ml by Nanodrop;

Source:

Rabbit

Isotype:

IgG

Immunogen Catalog Number:

AG29338

GenBank Accession Number:

NM\_000343

GeneID (NCBI):

6523

UNIPROT ID:

P13866

Full Name:

solute carrier family 5 (sodium/glucose cotransporter), member 1

Calculated MW:

73 kDa

Observed MW:

73 kDa

Purification Method:

Antigen affinity purification

Recommended Dilutions:

WB 1:500-1:2000

IP 0.5-4.0 ug for 1.0-3.0 mg of total protein lysate

IHC 1:200-1:800

IF-P 1:200-1:800

## Applications

Tested Applications:

WB, IHC, IF-P, IP, ELISA

Cited Applications:

WB

Species Specificity:

human, mouse, rat

Cited Species:

mouse, pig

**Note-IHC: suggested antigen retrieval with TE buffer pH 9.0; (\*) Alternatively, antigen retrieval may be performed with citrate buffer pH 6.0**

Positive Controls:

WB: mouse colon tissue, mouse kidney tissue, mouse small intestine tissue, rat colon tissue

IP: mouse kidney tissue,

IHC: mouse small intestine tissue,

IF-P: mouse small intestine tissue,

## Background Information

SLC5A1, also known as SGLT1, is a sodium-dependent glucose transporter (SGLT) family member. SGLT1 couples sugar transport to Na<sup>+</sup> gradients across the intestinal brush border (PMID: 8563765). SGLT1 mediates active glucose and galactose absorption in the intestine and renal glucose scavenging. Mutations in SGLT1 cause glucose-galactose malabsorption (GGM) syndrome (PMID: 34880492). SGLT1 is expressed in intestine and endometrial cells (PMID: 2490366, 28974690).

## Notable Publications

Author	Pubmed ID	Journal	Application
Zehua Liu	39162187	Food Funct	WB
Xiaopeng Tang	38619320	J Anim Sci	WB

## Storage

Storage:

Store at -20°C. Stable for one year after shipment.

Storage Buffer:

PBS with 0.02% sodium azide and 50% glycerol pH 7.3.

Aliquoting is unnecessary for -20°C storage

\*\*\* 20ul sizes contain 0.1% BSA

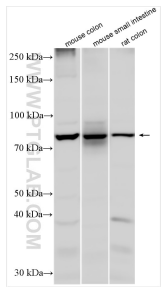
For technical support and original validation data for this product please contact:

T: 1 (888) 4PTGLAB (1-888-478-4522) (toll free in USA), or 1(312) 455-8498 (outside USA)

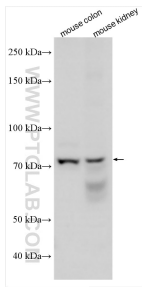
E: proteintech@ptglab.com  
W: ptglab.com

This product is exclusively available under Proteintech Group brand and is not available to purchase from any other manufacturer.

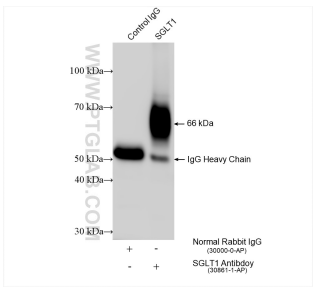
Selected Validation Data



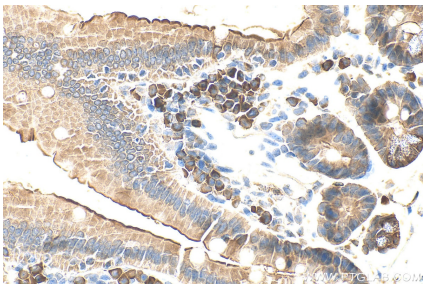
Various lysates were subjected to SDS PAGE followed by western blot with 30861-1-AP (SGLT1 antibody) at dilution of 1:1000 incubated at room temperature for 1.5 hours.



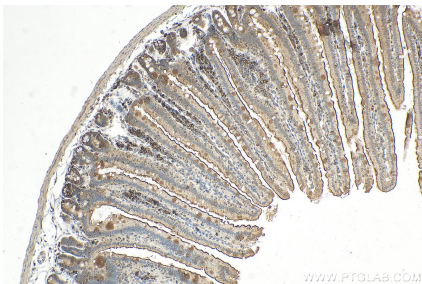
Various lysates were subjected to SDS PAGE followed by western blot with 30861-1-AP (SGLT1 antibody) at dilution of 1:800 incubated at room temperature for 1.5 hours.



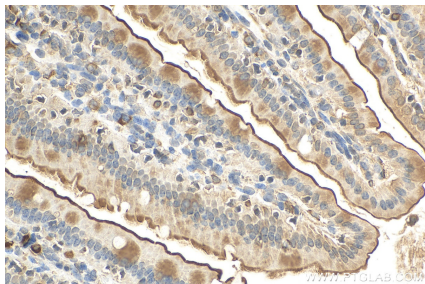
IP result of anti-SGLT1 (IP:30861-1-AP, 4ug; Detection:30861-1-AP 1:400) with mouse kidney tissue lysate 2160 ug.



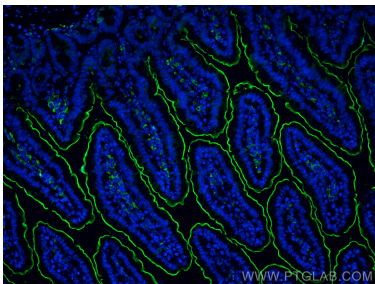
Immunohistochemical analysis of paraffin-embedded mouse small intestine tissue slide using 30861-1-AP (SGLT1 antibody) at dilution of 1:800 (under 40x lens). Heat mediated antigen retrieval with Tris-EDTA buffer (pH 9.0).



Immunohistochemical analysis of paraffin-embedded mouse small intestine tissue slide using 30861-1-AP (SGLT1 antibody) at dilution of 1:400 (under 10x lens). Heat mediated antigen retrieval with Tris-EDTA buffer (pH 9.0).



Immunohistochemical analysis of paraffin-embedded mouse small intestine tissue slide using 30861-1-AP (SGLT1 antibody) at dilution of 1:400 (under 40x lens). Heat mediated antigen retrieval with Tris-EDTA buffer (pH 9.0).



Immunofluorescent analysis of (4% PFA) fixed paraffin-embedded mouse small intestine tissue using SGLT1 antibody (30861-1-AP) at dilution of 1:400 and CoraLite®488-Conjugated Goat Anti-Rabbit IgG(H+L) (SA00013-2). Heat mediated antigen retrieval with Tris-EDTA buffer (pH 9.0).