

For Research Use Only

SGLT1 Polyclonal antibody, PBS Only

Catalog Number: 30861-1-PBS



Basic Information

Catalog Number:

30861-1-PBS

Size:

100ug, Concentration: 1 mg/ml by Nanodrop;

Source:

Rabbit

Isotype:

IgG

Immunogen Catalog Number:

AG29338

GenBank Accession Number:

NM_000343

GeneID (NCBI):

6523

UNIPROT ID:

P13866

Full Name:

solute carrier family 5 (sodium/glucose cotransporter), member 1

Calculated MW:

73 kDa

Observed MW:

73 kDa

Purification Method:

Antigen affinity purification

Applications

Tested Applications:

WB, IHC, IF-P, IP, Indirect ELISA

Species Specificity:

human, mouse, rat

Background Information

SLC5A1, also known as SGLT1, is a sodium-dependent glucose transporter (SGLT) family member. SGLT1 couples sugar transport to Na⁺ gradients across the intestinal brush border (PMID: 8563765). SGLT1 mediates active glucose and galactose absorption in the intestine and renal glucose scavenging. Mutations in SGLT1 cause glucose-galactose malabsorption (GGM) syndrome (PMID: 34880492). SGLT1 is expressed in intestine and endometrial cells (PMID: 2490366, 28974690).

Storage

Storage:

Store at -80°C.

Storage Buffer:

PBS Only

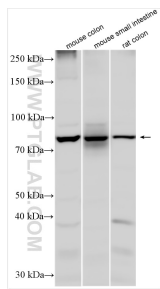
For technical support and original validation data for this product please contact:

T: 1 (888) 4PTGLAB (1-888-478-4522) (toll free in USA), or 1(312) 455-8498 (outside USA)

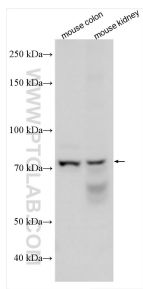
E: proteintech@ptglab.com
W: ptglab.com

This product is exclusively available under Proteintech Group brand and is not available to purchase from any other manufacturer.

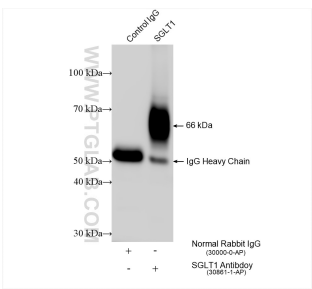
Selected Validation Data



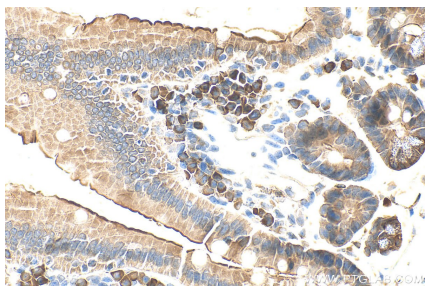
Various lysates were subjected to SDS PAGE followed by western blot with 30861-1-AP (SGLT1 antibody) at dilution of 1:1000 incubated at room temperature for 1.5 hours. This data was developed using the same antibody clone with 30861-1-PBS in a different storage buffer formulation.



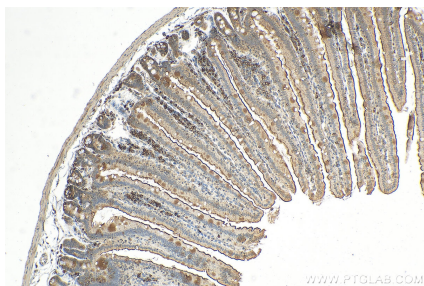
Various lysates were subjected to SDS PAGE followed by western blot with 30861-1-AP (SGLT1 antibody) at dilution of 1:800 incubated at room temperature for 1.5 hours. This data was developed using the same antibody clone with 30861-1-PBS in a different storage buffer formulation.



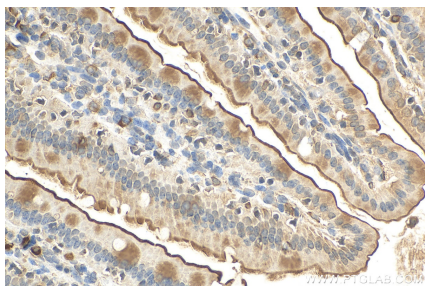
IP result of anti-SGLT1 (IP:30861-1-AP, 4ug; Detection:30861-1-AP 1:400) with mouse kidney tissue lysate 2160 ug. This data was developed using the same antibody clone with 30861-1-PBS in a different storage buffer formulation.



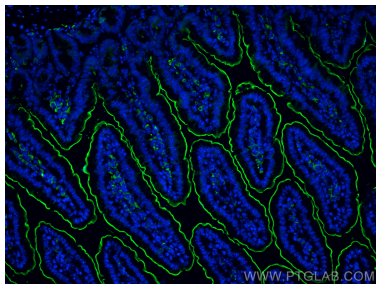
Immunohistochemical analysis of paraffin-embedded mouse small intestine tissue slide using 30861-1-AP (SGLT1 antibody) at dilution of 1:800 (under 40x lens). Heat mediated antigen retrieval with Tris-EDTA buffer (pH 9.0). This data was developed using the same antibody clone with 30861-1-PBS in a different storage buffer formulation.



Immunohistochemical analysis of paraffin-embedded mouse small intestine tissue slide using 30861-1-AP (SGLT1 antibody) at dilution of 1:400 (under 10x lens). Heat mediated antigen retrieval with Tris-EDTA buffer (pH 9.0). This data was developed using the same antibody clone with 30861-1-PBS in a different storage buffer formulation.



Immunohistochemical analysis of paraffin-embedded mouse small intestine tissue slide using 30861-1-AP (SGLT1 antibody) at dilution of 1:400 (under 40x lens). Heat mediated antigen retrieval with Tris-EDTA buffer (pH 9.0). This data was developed using the same antibody clone with 30861-1-PBS in a different storage buffer formulation.



Immunofluorescent analysis of (4% PFA) fixed paraffin-embedded mouse small intestine tissue using SGLT1 antibody (30861-1-AP) at dilution of 1:400 and CoraLite®488-Conjugated Goat Anti-Rabbit IgG(H+L) (SA00013-2). Heat mediated antigen retrieval with Tris-EDTA buffer (pH 9.0). This data was developed using the same antibody clone with 30861-1-PBS in a different storage buffer formulation.