

For Research Use Only

PNPLA1 Polyclonal antibody

Catalog Number: 30905-1-AP



Basic Information

Catalog Number:

30905-1-AP

Size:

150ul , Concentration: 350 ug/ml by Nanodrop;

Source:

Rabbit

Isotype:

IgG

Immunogen Catalog Number:

AG34139

GenBank Accession Number:

BC103907

GeneID (NCBI):

285848

UNIPROT ID:

Q8N8W4

Full Name:

patatin-like phospholipase domain containing 1

Calculated MW:

532 aa, 58 kDa

Observed MW:

48kDa;58kDa

Purification Method:

Antigen affinity Purification

Recommended Dilutions:

WB 1:500-1:2000

Applications

Tested Applications:

WB, ELISA

Species Specificity:

human, mouse

Positive Controls:

WB : mouse spleen tissue,

Background Information

PNPLA1 is a member of the patatin-like phospholipase (PNPLA) family. PNPLAs are highly conserved enzymes of prokaryotic and eukaryotic organisms that play an important role in lipid homeostasis. PNPLA1 has been identified as an essential transacylase for acylceramide biosynthesis to maintain the epidermal permeability barrier (PMID: 30290227). It is mainly expressed in the skin and has 3 isoforms with MW of 58, 48 and 49 kDa.

Storage

Storage:

Store at -20°C. Stable for one year after shipment.

Storage Buffer:

PBS with 0.02% sodium azide and 50% glycerol pH 7.3.

Aliquoting is unnecessary for -20°C storage

*** 20ul sizes contain 0.1% BSA

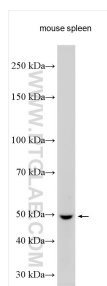
For technical support and original validation data for this product please contact:

T: 1 (888) 4PTGLAB (1-888-478-4522) (toll free in USA), or 1(312) 455-8498 (outside USA)

E: proteintech@ptglab.com
W: ptglab.com

This product is exclusively available under Proteintech Group brand and is not available to purchase from any other manufacturer.

Selected Validation Data



mouse spleen tissue were subjected to SDS PAGE followed by western blot with 30905-1-AP (PNPLA1 antibody) at dilution of 1:1000 incubated at room temperature for 1.5 hours.