

For Research Use Only

SAGE1 Polyclonal antibody, PBS Only

Catalog Number:30914-1-PBS



Basic Information

Catalog Number:

30914-1-PBS

Size:

100ug, Concentration: 1 mg/ml by
Nanodrop;

Source:

Rabbit

Isotype:

IgG

Immunogen Catalog Number:

AG34216

GenBank Accession Number:

NM_018666.2

GeneID (NCBI):

55511

UNIPROT ID:

Q9NXZ1

Full Name:

sarcoma antigen 1

Calculated MW:

99kd

Purification Method:

Antigen affinity Purification

Applications

Tested Applications:

IHC, IF/ICC, Indirect ELISA

Species Specificity:

human

Background Information

Sarcoma antigen 1 (SAGE1) is a cancer/testis antigen that is limited to the spermatogonia and pre-meiotic spermatocytes and localized to the nuclei (PMID: 34465596). It is primarily found in primates and is generally absent in lower mammals like rodents

Storage

Storage:

Store at -80°C.

Storage Buffer:

PBS only, pH7.3

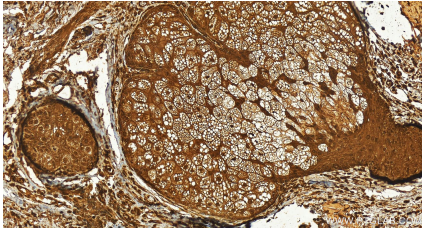
For technical support and original validation data for this product please contact:

T: 1 (888) 4PTGLAB (1-888-478-4522) (toll free
in USA), or 1(312) 455-8498 (outside USA)

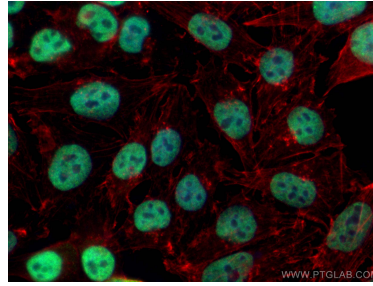
E: proteintech@ptglab.com
W: ptglab.com

This product is exclusively available under Proteintech Group brand and is not available to purchase from any other manufacturer.

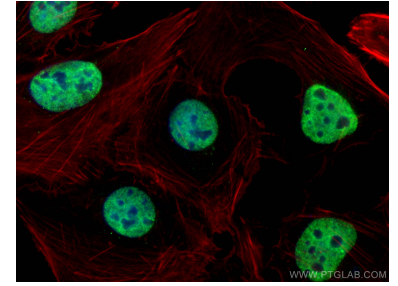
Selected Validation Data



Immunohistochemical analysis of paraffin-embedded human skin cancer tissue slide using 30914-1-AP (SAGE1 antibody) at dilution of 1:200 (under 20x lens). Heat mediated antigen retrieval with Tris-EDTA buffer (pH 9.0). This data was developed using the same antibody clone with 30914-1-PBS in a different storage buffer formulation.



Immunofluorescent analysis of (4% PFA) fixed A375 cells using SAGE1 antibody (30914-1-AP) at dilution of 1:400 and CoraLite@488-Conjugated AffiniPure Goat Anti-Rabbit IgG(H+L) (SA00013-2), CL594-phalloidin (red). This data was developed using the same antibody clone with 30914-1-PBS in a different storage buffer formulation.



Immunofluorescent analysis of (4% PFA) fixed U2OS cells using SAGE1 antibody (30914-1-AP) at dilution of 1:400 and CoraLite@488-Conjugated AffiniPure Goat Anti-Rabbit IgG(H+L) (SA00013-2), CL594-phalloidin (red). This data was developed using the same antibody clone with 30914-1-PBS in a different storage buffer formulation.