

For Research Use Only

# SPP2 Polyclonal antibody

Catalog Number: 30922-1-AP



## Basic Information

<b>Catalog Number:</b> 30922-1-AP	<b>GenBank Accession Number:</b> NM_006944	<b>Purification Method:</b> Antigen affinity purification
<b>Size:</b> 150ul , Concentration: 400 ug/ml by Nanodrop;	<b>GeneID (NCBI):</b> 6694	<b>Recommended Dilutions:</b> WB 1:1000-1:6000
<b>Source:</b> Rabbit	<b>UNIPROT ID:</b> Q13103	
<b>Isotype:</b> IgG	<b>Full Name:</b> secreted phosphoprotein 2, 24kDa	
<b>Immunogen Catalog Number:</b> AG29299	<b>Calculated MW:</b> 24 kDa	
	<b>Observed MW:</b> 24 kDa	

## Applications

<b>Tested Applications:</b> WB, ELISA	<b>Positive Controls:</b> WB : human placenta tissue,
<b>Species Specificity:</b> human	

## Background Information

SPP2 (Secreted phosphoprotein 24), also known as SPP24. SPP2 is a secreted phosphoprotein, which was originally isolated and purified from bovine bone density. It is widely distributed in the body, mainly produced in the liver and transported to other tissues. SPP2 is expressed in many tissues, especially in the liver. Studies have shown that the expression level of SPP2 is up-regulated in liver cirrhosis. In addition, the expression of SPP2 is significantly related to many genes, including APOA1, SLC2A2 and TTR (PMID: 38448371). SPP2 has many biological functions, including: it can inhibit the activity of cysteine protease, participate in bone formation, inhibit calcification, and regulate BMP/TGF- $\beta$  signaling pathway. SPP2 may be a tumor suppressor, which inhibits the development of HCC by inhibiting BMP/TGF- $\beta$  signaling pathway. The molecular weight of SPP2 is 24 kDa.

## Storage

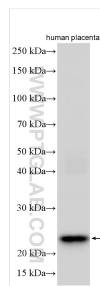
**Storage:**  
Store at -20°C. Stable for one year after shipment.  
**Storage Buffer:**  
PBS with 0.02% sodium azide and 50% glycerol pH 7.3.  
**Aliquoting is unnecessary for -20°C storage**

\*\*\* 20ul sizes contain 0.1% BSA

For technical support and original validation data for this product please contact:  
T: 1 (888) 4PTGLAB (1-888-478-4522) (toll free in USA), or 1(312) 455-8498 (outside USA)  
E: [proteintech@ptglab.com](mailto:proteintech@ptglab.com)  
W: [ptglab.com](http://ptglab.com)

This product is exclusively available under Proteintech Group brand and is not available to purchase from any other manufacturer.

## Selected Validation Data



Various lysates were subjected to SDS PAGE followed by western blot with 30922-1-AP (SPP2 antibody) at dilution of 1:3000 incubated at room temperature for 1.5 hours.