

For Research Use Only

# LAMB2 Polyclonal antibody, PBS Only

Catalog Number: 30943-1-PBS



## Basic Information

**Catalog Number:**

30943-1-PBS

**Size:**

100ug, Concentration: 1 mg/ml by Nanodrop;

**Source:**

Rabbit

**Isotype:**

IgG

**Immunogen Catalog Number:**

AG33468

**GenBank Accession Number:**

NM\_002292.3

**GeneID (NCBI):**

3913

**UNIPROT ID:**

P55268

**Full Name:**

laminin, beta 2 (laminin 5)

**Calculated MW:**

196 kDa

**Observed MW:**

195-200 kDa

**Purification Method:**

Antigen affinity Purification

## Applications

**Tested Applications:**

WB, IHC, Indirect ELISA

**Species Specificity:**

human, mouse

## Background Information

LAMB2 (laminin subunit beta 2), also known as LAMS. Laminins, a family of extracellular matrix glycoproteins, are the major noncollagenous constituent of basement membranes. They have been implicated in a wide variety of biological processes including cell adhesion, differentiation, migration, signaling, neurite outgrowth and metastasis. Laminins, composed of 3 non identical chains: laminin alpha, beta and gamma (formerly A, B1, and B2, respectively), form a cruciform structure consisting of 3 short arms, each formed by a different chain, and a long arm composed of all 3 chains. This gene encodes the beta chain isoform laminin, beta 2. It is enriched in the basement membrane of muscles at the neuromuscular junctions, kidney glomerulus and vascular smooth muscle. Transgenic mice in which the beta 2 chain gene was inactivated by homologous recombination, showed defects in the maturation of neuromuscular junctions and impairment of glomerular filtration. The calculated molecular weight of LAMB2 is 200 kDa.

## Storage

**Storage:**

Store at -80°C.

**Storage Buffer:**

PBS Only

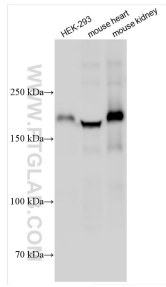
For technical support and original validation data for this product please contact:

T: 1 (888) 4PTGLAB (1-888-478-4522) (toll free in USA), or 1(312) 455-8498 (outside USA)

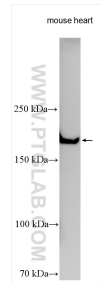
E: [proteintech@ptglab.com](mailto:proteintech@ptglab.com)  
W: [ptglab.com](http://ptglab.com)

**This product is exclusively available under Proteintech Group brand and is not available to purchase from any other manufacturer.**

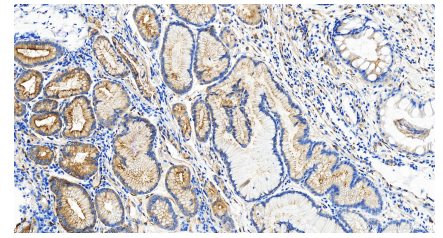
## Selected Validation Data



Various lysates were subjected to SDS PAGE followed by western blot with 30943-1-AP (LAMB2 antibody) at dilution of 1:6000 incubated at room temperature for 1.5 hours. This data was developed using the same antibody clone with 30943-1-PBS in a different storage buffer formulation.



Various lysates were subjected to SDS PAGE followed by western blot with 30943-1-AP (LAMB2 antibody) at dilution of 1:2000 incubated at room temperature for 1.5 hours. This data was developed using the same antibody clone with 30943-1-PBS in a different storage buffer formulation.



Immunohistochemical analysis of paraffin-embedded human stomach cancer tissue slide using 30943-1-AP (LAMB2 antibody) at dilution of 1:1500 (under 20x lens). Heat mediated antigen retrieval with Tris-EDTA buffer (pH 9.0). This data was developed using the same antibody clone with 30943-1-PBS in a different storage buffer formulation.