

For Research Use Only

MIF Polyclonal antibody

Catalog Number: 30957-1-AP



Basic Information

Catalog Number:

30957-1-AP

Size:

150ul, Concentration: 500 ug/ml by Nanodrop;

Source:

Rabbit

Isotype:

IgG

GenBank Accession Number:

NM_010798.2

GeneID (NCBI):

17319

UNIPROT ID:

P34884

Full Name:

macrophage migration inhibitory factor

Calculated MW:

13KD

Observed MW:

13 kDa

Purification Method:

Antigen affinity purification

Recommended Dilutions:

WB 1:1000-1:6000

IF/ICC 1:200-1:800

Applications

Tested Applications:

WB, IF/ICC, FC (Intra), ELISA

Species Specificity:

mouse, rat

Positive Controls:

WB : J774A.1 cells, NIH/3T3 cells, Neuro-2a cells, RAW 264.7 cells, C6 cells, mouse brain tissue, mouse kidney tissue

IF/ICC : Neuro-2a cells, NIH/3T3 cells

Background Information

MIF is a pleiotropic cytokine that contributes to the pathogenesis of many autoimmune diseases through its upstream immunoregulatory function and its polymorphic genetic locus. MIF is a highly conserved protein of 12.5 kDa, with evolutionarily ancient homologues in plants, protozoans, nematodes, and invertebrates.

Storage

Storage:

Store at -20°C. Stable for one year after shipment.

Storage Buffer:

PBS with 0.02% sodium azide and 50% glycerol pH 7.3.

Aliquoting is unnecessary for -20°C storage

*** 20ul sizes contain 0.1% BSA

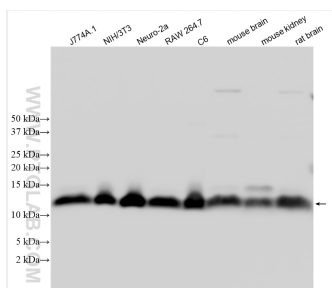
For technical support and original validation data for this product please contact:

T: 1 (888) 4PTGLAB (1-888-478-4522) (toll free in USA), or 1(312) 455-8498 (outside USA)

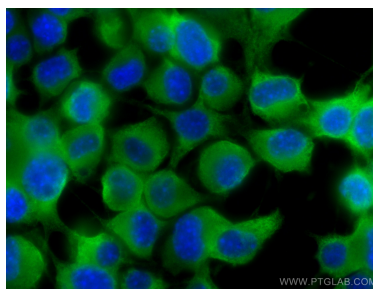
E: proteintech@ptglab.com
W: ptglab.com

This product is exclusively available under Proteintech Group brand and is not available to purchase from any other manufacturer.

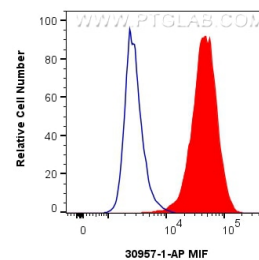
Selected Validation Data



Various lysates were subjected to SDS PAGE followed by western blot with 30957-1-AP (MIF antibody) at dilution of 1:3000 incubated at room temperature for 1.5 hours.



Immunofluorescent analysis of (4% PFA) fixed Neuro-2a cells using MIF antibody (30957-1-AP) at dilution of 1:400 and CoraLite®488-Conjugated AffiniPure Goat Anti-Rabbit IgG(H+L).



1X10⁶ NIH/3T3 cells were intracellularly stained with 0.4 ug Anti-Mouse MIF (30957-1-AP) and CoraLite®488-Conjugated AffiniPure Goat Anti-Rabbit IgG(H+L) at dilution 1:1000 (red), or 0.4 ug Rabbit IgG control Rabbit PolyAb (30000-0-AP, Clone:) (blue). Cells were fixed with 4% PFA and permeabilized with Flow Cytometry Perm Buffer (PF00011-C).