

For Research Use Only

# TLE4 Polyclonal antibody, PBS Only

Catalog Number: 30959-1-PBS



## Basic Information

**Catalog Number:**

30959-1-PBS

**Size:**

100ug, Concentration: 1 mg/ml by Nanodrop;

**Source:**

Rabbit

**Isotype:**

IgG

**Immunogen Catalog Number:**

AG34006

**GenBank Accession Number:**

BC059405

**GeneID (NCBI):**

7091

**UNIPROT ID:**

Q04727

**Full Name:**

transducin-like enhancer of split 4 (E(sp1) homolog, Drosophila)

**Calculated MW:**

84 kDa

**Observed MW:**

76-88 kDa

**Purification Method:**

Antigen affinity Purification

## Applications

**Tested Applications:**

WB, IP, Indirect ELISA

**Species Specificity:**

human, mouse

## Background Information

TLE4 (Transducin-like enhancer protein 4), also known as GRG4. It is predicted to be located in the nucleus. Tle4 promotes acquisition of corticothalamic identity and blocks emergence of core characteristics of subcerebral/corticospinal projection neuron identity, including gene expression and connectivity. During the first post-natal week, when corticothalamic innervation is ongoing, Tle4 is required to stabilize corticothalamic neuron identity, limiting interference from differentiation programs of developmentally related neuron classes (PMID: 37561632). The molecular weight of TLE4 is 76 kDa.

## Storage

**Storage:**

Store at -80°C.

**Storage Buffer:**

PBS only, pH7.3

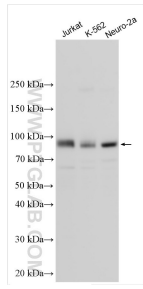
For technical support and original validation data for this product please contact:

T: 1 (888) 4PTGLAB (1-888-478-4522) (toll free in USA), or 1(312) 455-8498 (outside USA)

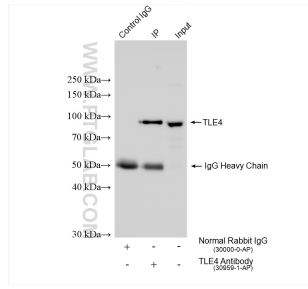
E: [proteintech@ptglab.com](mailto:proteintech@ptglab.com)  
W: [ptglab.com](http://ptglab.com)

**This product is exclusively available under Proteintech Group brand and is not available to purchase from any other manufacturer.**

## Selected Validation Data



Various lysates were subjected to SDS PAGE followed by western blot with 30959-1-AP (TLE4 antibody) at dilution of 1:4000 incubated at room temperature for 1.5 hours. This data was developed using the same antibody clone with 30959-1-PBS in a different storage buffer formulation.



IP result of anti-TLE4 (IP:30959-1-AP, 4ug; Detection:30959-1-AP 1:800) with K-562 cells lysate 1720 ug. This data was developed using the same antibody clone with 30959-1-PBS in a different storage buffer formulation.