

For Research Use Only

SLC6A9 / GlyT1 Polyclonal antibody

Catalog Number: 30971-1-AP



Basic Information

Catalog Number:

30971-1-AP

Size:

150ul, Concentration: 500 ug/ml by Nanodrop;

Source:

Rabbit

Isotype:

IgG

Immunogen Catalog Number:

AG34437

GenBank Accession Number:

NM_201649

GeneID (NCBI):

6536

UNIPROT ID:

P48067

Full Name:

solute carrier family 6 (neurotransmitter transporter, glycine), member 9

Calculated MW:

706 aa, 78 kDa

Observed MW:

60 kDa

Purification Method:

Antigen affinity purification

Recommended Dilutions:

WB 1:500-1:3000

Applications

Tested Applications:

WB, ELISA

Species Specificity:

human

Positive Controls:

WB : BxPC-3 cells,

Background Information

SLC6A9, also named glycine transporter 1 (GlyT1), is a transporter protein of the SLC6 family of sodium- and chloride-dependent neurotransmitter transporters. GlyT1 is the main regulator of synaptic glycine concentrations, assisted by the neuronal GlyT2 (PMID: 28828604). The 55-60 kDa band is the partially glycosylated form of GlyT1 (PMID: 27874011, PMID: 8995423).

Storage

Storage:

Store at -20°C. Stable for one year after shipment.

Storage Buffer:

PBS with 0.02% sodium azide and 50% glycerol pH 7.3.

Aliquoting is unnecessary for -20°C storage

*** 20ul sizes contain 0.1% BSA

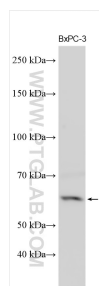
For technical support and original validation data for this product please contact:

T: 1 (888) 4PTGLAB (1-888-478-4522) (toll free in USA), or 1(312) 455-8498 (outside USA)

E: proteintech@ptglab.com
W: ptglab.com

This product is exclusively available under Proteintech Group brand and is not available to purchase from any other manufacturer.

Selected Validation Data



BxPC-3 cells lysates were subjected to SDS PAGE followed by western blot with 30971-1-AP (SLC6A9 / GlyT1 antibody) at dilution of 1:1500 incubated at room temperature for 1.5 hours.