

For Research Use Only

Glypican-5 Polyclonal antibody

Catalog Number: 30999-1-AP



Basic Information

Catalog Number:

30999-1-AP

Size:

150ul , Concentration: 750 ug/ml by Nanodrop;

Source:

Rabbit

Isotype:

IgG

Immunogen Catalog Number:

AG34039

GenBank Accession Number:

BC039730

GeneID (NCBI):

2262

UNIPROT ID:

P78333

Full Name:

glypican 5

Calculated MW:

572 aa, 64 kDa

Observed MW:

63 kDa

Purification Method:

Antigen affinity Purification

Recommended Dilutions:

WB 1:1000-1:6000

Applications

Tested Applications:

WB, ELISA

Species Specificity:

human

Positive Controls:

WB : HeLa cells, NCI-H1299 cells

Background Information

Glypican-5 (GPC5), which is predicted to be located in the cell membrane. In adult, primarily expressed in the brain. Also detected in fetal brain, lung and liver (PMID: 9070915). Glypican-5 is a member of heparan sulfate proteoglycans. The repressive role of GPC5 intumorigenesis has been reported in a variety of cancers, including rhabdomyosarcoma, breast cancer, and prostate cancer. GPC5, which is lowly expressed in lung cancer tissues compared with adjacent noncancerous tissues, exhibits a suppressive effect on migration and invasion, and it can also induce G1/S phase arrest of the lung cancer cells in vitro, which is associated with a better prognosis (PMID: 34079082). The molecular weight of Glypican-5 is 63 kDa.

Storage

Storage:

Store at -20°C. Stable for one year after shipment.

Storage Buffer:

PBS with 0.02% sodium azide and 50% glycerol pH 7.3.

Aliquoting is unnecessary for -20°C storage

*** 20ul sizes contain 0.1% BSA

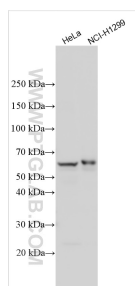
For technical support and original validation data for this product please contact:

T: 1 (888) 4PTGLAB (1-888-478-4522) (toll free in USA), or 1(312) 455-8498 (outside USA)

E: proteintech@ptglab.com
W: ptglab.com

This product is exclusively available under Proteintech Group brand and is not available to purchase from any other manufacturer.

Selected Validation Data



Various lysates were subjected to SDS PAGE followed by western blot with 30999-1-AP (GPC5 antibody) at dilution of 1:3000 incubated at room temperature for 1.5 hours.