

For Research Use Only

# LRMDA Polyclonal antibody

Catalog Number: 31001-1-AP



## Basic Information

Catalog Number:

31001-1-AP

Size:

150ul, Concentration: 500 ug/ml by Nanodrop;

Source:

Rabbit

Isotype:

IgG

Immunogen Catalog Number:

AG33898

GenBank Accession Number:

NM\_032024

GeneID (NCBI):

83938

UNIPROT ID:

Q9H2I8

Full Name:

chromosome 10 open reading frame 11

Calculated MW:

23 kDa

Observed MW:

25-30 kDa

Purification Method:

Antigen affinity Purification

Recommended Dilutions:

WB 1:1000-1:4000

## Applications

Tested Applications:

WB, ELISA

Species Specificity:

Human, mouse

Positive Controls:

WB : NIH/3T3 cells, THP-1 cells

## Background Information

The LRMDA gene, also known as C10orf11, encodes a leucine-rich repeating protein that is thought to play a role in melanocyte differentiation. Variants in this gene have been associated with autosomal recessive oculocutaneous albinism 7 (OCA7), but have never been implicated in metabolic disorders. Interestingly, however, the variant associated with age at diabetes onset is also associated with differences in LRMDA expression in the brain, including the hypothalamus, where peptides controlling pigmentation, such as melanocortins and their receptors, are involved in the regulation of body weight and metabolism. (PMID: 36104811)

## Storage

Storage:

Store at -20°C. Stable for one year after shipment.

Storage Buffer:

PBS with 0.02% sodium azide and 50% glycerol pH 7.3.

Aliquoting is unnecessary for -20°C storage

\*\*\* 20ul sizes contain 0.1% BSA

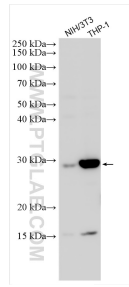
For technical support and original validation data for this product please contact:

T: 1 (888) 4PTGLAB (1-888-478-4522) (toll free in USA), or 1(312) 455-8498 (outside USA)

E: [proteintech@ptglab.com](mailto:proteintech@ptglab.com)  
W: [ptglab.com](http://ptglab.com)

This product is exclusively available under Proteintech Group brand and is not available to purchase from any other manufacturer.

## Selected Validation Data



Various lysates were subjected to SDS PAGE followed by western blot with 31001-1-AP (LRMDA antibody) at dilution of 1:2000 incubated at room temperature for 1.5 hours.