

For Research Use Only

SLC35D1 Polyclonal antibody

Catalog Number: 31019-1-AP



Basic Information

Catalog Number:

31019-1-AP

Size:

150ul, Concentration: 500 ug/ml by Nanodrop;

Source:

Rabbit

Isotype:

IgG

Immunogen Catalog Number:

AG34372

GenBank Accession Number:

BC093786

GeneID (NCBI):

23169

UNIPROT ID:

Q9NTN3

Full Name:

solute carrier family 35 (UDP-glucuronic acid/UDP-N-acetylglactosamine dual transporter), member D1

Calculated MW:

355 aa, 39 kDa

Observed MW:

35-39 kDa

Purification Method:

Antigen affinity Purification

Recommended Dilutions:

WB 1:1000-1:4000

Applications

Tested Applications:

WB, ELISA

Species Specificity:

human, mouse, rat

Positive Controls:

WB : mouse liver tissue, rat liver tissue

Background Information

SLC35D1 belongs to the TPT transporter family and is a nucleotide sugar transporter (NST) expressed in the endoplasmic reticulum. Loss-of-function mutations in SLC35D1 cause Schneckenbecken dysplasia, a severe skeletal dysplasia (PMID: 19508970; 35934917).

Storage

Storage:

Store at -20°C. Stable for one year after shipment.

Storage Buffer:

PBS with 0.02% sodium azide and 50% glycerol pH 7.3.

Aliquoting is unnecessary for -20°C storage

*** 20ul sizes contain 0.1% BSA

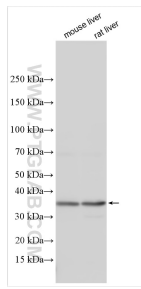
For technical support and original validation data for this product please contact:

T: 1 (888) 4PTGLAB (1-888-478-4522) (toll free in USA), or 1(312) 455-8498 (outside USA)

E: proteintech@ptglab.com
W: ptglab.com

This product is exclusively available under Proteintech Group brand and is not available to purchase from any other manufacturer.

Selected Validation Data



Various lysates were subjected to SDS PAGE followed by western blot with 31019-1-AP (SLC35D1 antibody) at dilution of 1:2000 incubated at room temperature for 1.5 hours.