

For Research Use Only

caspase 1 Polyclonal antibody

Catalog Number: 31020-1-AP



Basic Information

| | | |
|---|--|--|
| Catalog Number: 31020-1-AP | GenBank Accession Number: BC008152 | Purification Method: Antigen affinity Purification |
| Size: 150ul , Concentration: 500 µg/ml by Nanodrop; | GeneID (NCBI): 12362 | Recommended Dilutions: WB 1:500-1:2000 |
| Source: Rabbit | UNIPROT ID: P29452 | |
| Isotype: IgG | Full Name: caspase 1 | |
| Immunogen Catalog Number: AG34441 | Observed MW: 35-40 kDa | |

Applications

Tested Applications:
WB, ELISA

Species Specificity:
mouse, rat

Positive Controls:

WB : mouse heart tissue, mouse skeletal muscle tissue, rat heart tissue, rat skeletal muscle tissue

Background Information

CASP1(caspase-1) is also named as IL1BC, IL1BCE and belongs to the peptidase C14A family. It is a cysteine protease that regulates inflammatory processes through its capacity to process and activate the interleukin-1-beta (IL1B), IL18, and IL33 precursor proteins. The active caspase-1 can increase cellular membrane permeability and intracellular calcium levels, which facilitates lysosome exocytosis and release of host antimicrobial factors and microbial products (PMID:21804020). 31020-1-AP is designed for mouse caspase 1.

Storage

Storage:

Store at -20°C. Stable for one year after shipment.

Storage Buffer:

PBS with 0.02% sodium azide and 50% glycerol pH 7.3.

Aliquoting is unnecessary for -20°C storage

*** 20ul sizes contain 0.1% BSA

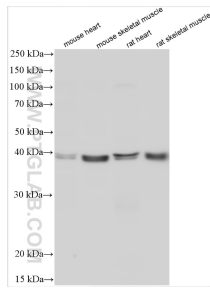
For technical support and original validation data for this product please contact:

T: 1 (888) 4PTGLAB (1-888-478-4522) (toll free in USA), or 1(312) 455-8498 (outside USA)

E: proteintech@ptglab.com
W: ptglab.com

This product is exclusively available under Proteintech Group brand and is not available to purchase from any other manufacturer.

Selected Validation Data



Various lysates were subjected to SDS PAGE followed by western blot with 31020-1-AP (Casp1 antibody) at dilution of 1:1000 incubated at room temperature for 1.5 hours.