

For Research Use Only

# ENOSF1 Polyclonal antibody

Catalog Number: 31022-1-AP



## Basic Information

### Catalog Number:

31022-1-AP

### Size:

150ul , Concentration: 450 ug/ml by Nanodrop;

### Source:

Rabbit

### Isotype:

IgG

### Immunogen Catalog Number:

AG34665

### GenBank Accession Number:

BC001285

### GeneID (NCBI):

55556

### UNIPROT ID:

Q7L5Y1

### Full Name:

enolase superfamily member 1

### Calculated MW:

50 kDa

### Observed MW:

49 kDa

### Purification Method:

Antigen affinity Purification

### Recommended Dilutions:

WB 1:1000-1:4000

IP 0.5-4.0 ug for 1.0-3.0 mg of total protein lysate

## Applications

### Tested Applications:

WB, IP, ELISA

### Species Specificity:

human

### Positive Controls:

WB : HeLa cells, K-562 cells, MCF-7 cells

IP : MCF-7 cells,

## Background Information

ENOSF1 (Mitochondrial enolase superfamily member 1) is also named as RTS and TYMSAS. The ENOSF1 gene, responsible for encoding the protein mitochondrial enolase superfamily member 1 (ENOF1), exhibits three distinct isoforms. One of these isoforms has been identified as an L-fuconate dehydratase, actively participating in the catabolism of L-fucose, a sugar integral to the carbohydrate composition of cellular glycoproteins (PMID: 38203276). The ENOSF1 transcript has been shown to act as antisense RNA and inhibit TYMS expression (PMID: 35931051).

## Storage

### Storage:

Store at -20°C. Stable for one year after shipment.

### Storage Buffer:

PBS with 0.02% sodium azide and 50% glycerol

Aliquoting is unnecessary for -20°C storage

\*\*\* 20ul sizes contain 0.1% BSA

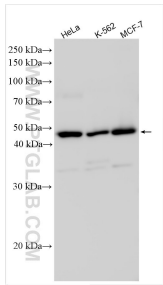
For technical support and original validation data for this product please contact:

T: 1 (888) 4PTGLAB (1-888-478-4522) (toll free in USA), or 1(312) 455-8498 (outside USA)

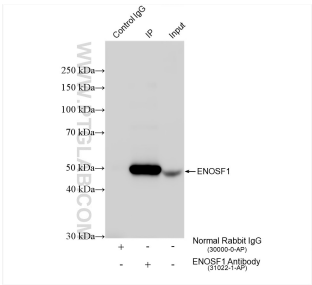
E: [proteintech@ptglab.com](mailto:proteintech@ptglab.com)  
W: [ptglab.com](http://ptglab.com)

This product is exclusively available under Proteintech Group brand and is not available to purchase from any other manufacturer.

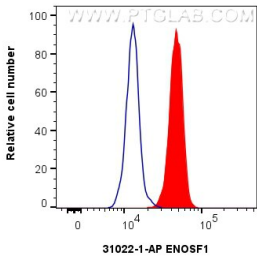
Selected Validation Data



Various lysates were subjected to SDS PAGE followed by western blot with 31022-1-AP (ENOSF1 antibody) at dilution of 1:2000 incubated at room temperature for 1.5 hours.



IP result of anti-ENOSF1 (IP:31022-1-AP, 4ug; Detection:31022-1-AP 1:2000) with MCF-7 cells lysate 1600 ug.



1x10<sup>6</sup> HeLa cells were intracellularly stained with 0.25 ug ENOSF1 Polyclonal antibody (31022-1-AP) and CoraLite®488-Conjugated Goat Anti-Rabbit IgG(H+L) (SA00013-2)(red), or 0.25 ug Isotype Control. Cells were fixed with 4% PFA and permeabilized with Flow Cytometry Perm Buffer (PF00011-C).