

For Research Use Only

ENOSF1 Polyclonal antibody, PBS Only

Catalog Number: 31022-1-PBS



Basic Information

Catalog Number:

31022-1-PBS

Size:

100ug, Concentration: 1 mg/ml by Nanodrop;

Source:

Rabbit

Isotype:

IgG

Immunogen Catalog Number:

AG34665

GenBank Accession Number:

BC001285

GeneID (NCBI):

55556

UNIPROT ID:

Q7L5Y1

Full Name:

enolase superfamily member 1

Calculated MW:

50 kDa

Observed MW:

49 kDa

Purification Method:

Antigen affinity Purification

Applications

Tested Applications:

WB, IP, Indirect ELISA

Species Specificity:

human

Background Information

ENOSF1 (Mitochondrial enolase superfamily member 1) is also named as RTS and TYMSAS. The ENOSF1 gene, responsible for encoding the protein mitochondrial enolase superfamily member 1 (ENOF1), exhibits three distinct isoforms. One of these isoforms has been identified as an L-fuconate dehydratase, actively participating in the catabolism of L-fucose, a sugar integral to the carbohydrate composition of cellular glycoproteins (PMID: 38203276). The ENOSF1 transcript has been shown to act as antisense RNA and inhibit TYMS expression (PMID: 35931051).

Storage

Storage:

Store at -80°C.

Storage Buffer:

PBS only

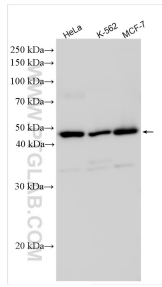
For technical support and original validation data for this product please contact:

T: 1 (888) 4PTGLAB (1-888-478-4522) (toll free in USA), or 1(312) 455-8498 (outside USA)

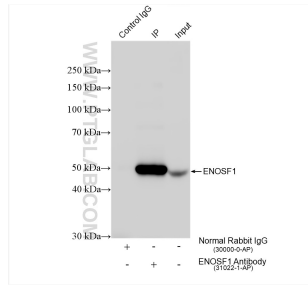
E: proteintech@ptglab.com
W: ptglab.com

This product is exclusively available under Proteintech Group brand and is not available to purchase from any other manufacturer.

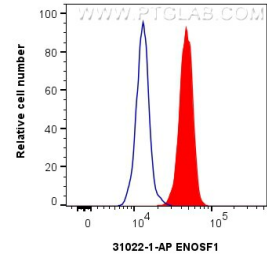
Selected Validation Data



Various lysates were subjected to SDS PAGE followed by western blot with 31022-1-AP (ENOSF1 antibody) at dilution of 1:2000 incubated at room temperature for 1.5 hours. This data was developed using the same antibody clone with 31022-1-PBS in a different storage buffer formulation.



IP result of anti-ENOSF1 (IP:31022-1-AP, 4ug; Detection:31022-1-AP 1:2000) with MCF-7 cells lysate 1600 ug. This data was developed using the same antibody clone with 31022-1-PBS in a different storage buffer formulation.



1×10^6 HeLa cells were intracellularly stained with 0.25 ug ENOSF1 Polyclonal antibody (31022-1-AP) and CoraLite®488-Conjugated Goat Anti-Rabbit IgG(H+L) (SA00013-2)(red), or 0.25 ug Isotype Control. Cells were fixed with 4% PFA and permeabilized with Flow Cytometry Perm Buffer (PF00011-C). This data was developed using the same antibody clone with 31022-1-PBS in a different storage buffer formulation.