

For Research Use Only

# SHBG Polyclonal antibody

Catalog Number: 31025-1-AP



## Basic Information

### Catalog Number:

31025-1-AP

### Size:

150ul, Concentration: 300 ug/ml by Nanodrop;

### Source:

Rabbit

### Isotype:

IgG

### GenBank Accession Number:

BC101785

### GeneID (NCBI):

6462

### UNIPROT ID:

P04278

### Full Name:

sex hormone-binding globulin

### Calculated MW:

402 aa, 44 kDa

### Observed MW:

40-50 kDa

### Purification Method:

Antigen affinity purification

### Recommended Dilutions:

WB 1:1000-1:4000

## Applications

### Tested Applications:

WB, ELISA

### Species Specificity:

Human

### Positive Controls:

WB : human placenta tissue,

## Background Information

SHBG (sex hormone-binding globulin), also known as androgen-binding protein (ABP), is the specific transport protein for sex steroid hormones in humans. SHBG is synthesized mainly by the liver and circulates in the blood, in form of homodimer with a single steroid-binding site per dimer. In addition to the plasma SHBG, a testis isoform expressed by Sertoli cells also exists due to the gene alternative splicing. Various bands (44-56 kDa) recognized by this antibody may represent variably glycosylated or different isoforms of SHBG.

## Storage

### Storage:

Store at -20°C. Stable for one year after shipment.

### Storage Buffer:

PBS with 0.02% sodium azide and 50% glycerol pH 7.3.

Aliquoting is unnecessary for -20°C storage

\*\*\* 20ul sizes contain 0.1% BSA

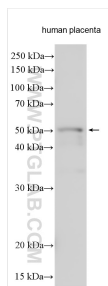
For technical support and original validation data for this product please contact:

T: 1 (888) 4PTGLAB (1-888-478-4522) (toll free in USA), or 1(312) 455-8498 (outside USA)

E: [proteintech@ptglab.com](mailto:proteintech@ptglab.com)  
W: [ptglab.com](http://ptglab.com)

This product is exclusively available under Proteintech Group brand and is not available to purchase from any other manufacturer.

## Selected Validation Data



human placenta tissue were subjected to SDS PAGE followed by western blot with 31025-1-AP (SHBG antibody) at dilution of 1:2000 incubated at room temperature for 1.5 hours.