

For Research Use Only

MLLT1 Polyclonal antibody

Catalog Number: 31029-1-AP

Featured Product



Basic Information

Catalog Number:

31029-1-AP

Size:

150ul, Concentration: 400 ug/ml by Nanodrop;

Source:

Rabbit

Isotype:

IgG

Immunogen Catalog Number:

AG34210

GenBank Accession Number:

BC148806

GeneID (NCBI):

4298

UNIPROT ID:

Q03111

Full Name:

myeloid/lymphoid or mixed-lineage leukemia (trithorax homolog, Drosophila); translocated to, 1

Calculated MW:

62 kDa

Observed MW:

80 kDa

Purification Method:

Antigen affinity Purification

Recommended Dilutions:

WB 1:500-1:2000

IF/ICC 1:50-1:500

Applications

Tested Applications:

WB, IF/ICC, ELISA

Species Specificity:

human

Positive Controls:

WB : MDA-MB-453 cells, HeLa cells, Jurkat cells

IF/ICC : HeLa cells,

Storage

Storage:

Store at -20°C. Stable for one year after shipment.

Storage Buffer:

PBS with 0.02% sodium azide and 50% glycerol pH 7.3.

Aliquoting is unnecessary for -20°C storage

*** 20ul sizes contain 0.1% BSA

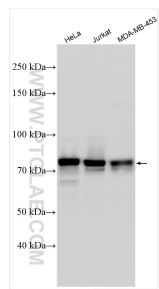
For technical support and original validation data for this product please contact:

T: 1 (888) 4PTGLAB (1-888-478-4522) (toll free in USA), or 1(312) 455-8498 (outside USA)

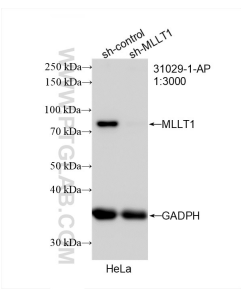
E: proteintech@ptglab.com
W: ptglab.com

This product is exclusively available under Proteintech Group brand and is not available to purchase from any other manufacturer.

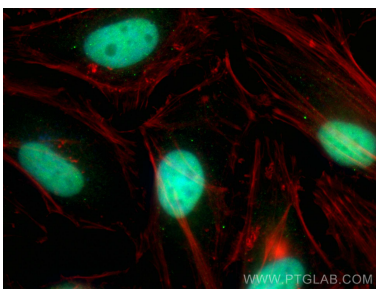
Selected Validation Data



Various lysates were subjected to SDS PAGE followed by western blot with 31029-1-AP (MLLT1 antibody) at dilution of 1:1000 incubated at room temperature for 1.5 hours.



WB result of MLLT1 antibody (31029-1-AP; 1:3000; incubated at room temperature for 1.5 hours) with sh-Control and sh-MLLT1 transfected HeLa cells.



Immunofluorescent analysis of (4% PFA) fixed HeLa cells using MLLT1 antibody (31029-1-AP) at dilution of 1:200 and CoraLite®488-Conjugated AffiniPure Goat Anti-Rabbit IgG(H+L) (SA00013-2), CL594-phalloidin (red).