

For Research Use Only

SVEP1 Polyclonal antibody, PBS Only

Catalog Number: 31030-1-PBS



Basic Information

Catalog Number: 31030-1-PBS	GenBank Accession Number: NM_153366	Purification Method: Antigen affinity Purification
Size: 100ug , Concentration: 1 mg/ml by Nanodrop;	GeneID (NCBI): 79987	
Source: Rabbit	UNIPROT ID: Q4LDE5	
Isotype: IgG	Full Name: sushi, von Willebrand factor type A, EGF and pentraxin domain containing 1	
Immunogen Catalog Number: AG34316	Calculated MW: 390 kDa	
	Observed MW: 460 kDa	

Applications

Tested Applications:
WB, Indirect ELISA

Species Specificity:
human

Background Information

SVEP1 (C9orf13), which is predicted to be located in the cell membrane, nucleus and cytoplasm. The protein is expressed in the whole epidermis, especially in the basal layer of epidermis, the upper and lower layers of basal layer and dermal fibroblasts in the upper dermis (PMID:27892606). At the same time, it is highly expressed in placenta, lung, adrenal gland and cerebellum, but weakly expressed in heart and skeletal muscle (PMID:11062057, PMID:27892606). The molecular weight of SVEP1 is 390 kDa. At the same time, it also has several isomers of 96kDa, 163kDa and 170kDa, and there are also glycosylation modifications. It is reported that the molecular weight is 460 kDa (PMID: 32371982). The protein may plays a role in initial cell attachment of stromal osteogenic cells.

Storage

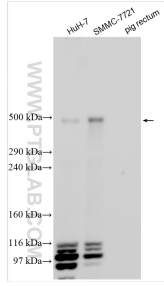
Storage:
Store at -80°C.

Storage Buffer:
PBS only, pH7.3

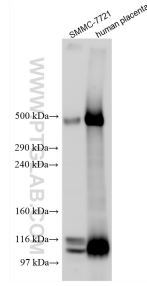
For technical support and original validation data for this product please contact:
T: 1 (888) 4PTGLAB (1-888-478-4522) (toll free in USA), or 1(312) 455-8498 (outside USA) E: proteintech@ptglab.com
W: ptglab.com

This product is exclusively available under Proteintech Group brand and is not available to purchase from any other manufacturer.

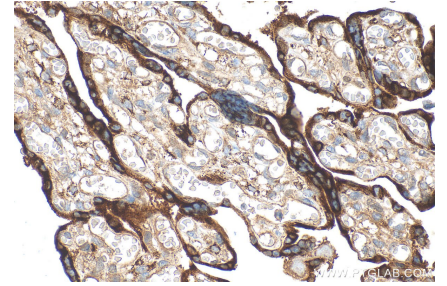
Selected Validation Data



Various lysates were subjected to Tris-acetate followed by western blot with 31030-1-AP (SVEP1 antibody) at dilution of 1:600 incubated at room temperature for 1.5 hours. This data was developed using the same antibody clone with 31030-1-PBS in a different storage buffer formulation.



Various lysates were subjected to Tris-Acetate gel system followed by western blot with 31030-1-AP (SVEP1 antibody) at dilution of 1:600 incubated at room temperature for 1.5 hours. This data was developed using the same antibody clone with 31030-1-PBS in a different storage buffer formulation.



Immunohistochemical analysis of paraffin-embedded human placenta tissue slide using 31030-1-AP (SVEP1 antibody) at dilution of 1:1000 (under 40x lens). Heat mediated antigen retrieval with Tris-EDTA buffer (pH 9.0). This data was developed using the same antibody clone with 31030-1-PBS in a different storage buffer formulation.