

For Research Use Only

UTP18 Polyclonal antibody

Catalog Number: 31055-1-AP



Basic Information

Catalog Number:

31055-1-AP

Size:

150ul, Concentration: 400 ug/ml by Nanodrop;

Source:

Rabbit

Isotype:

IgG

Immunogen Catalog Number:

AG34662

GenBank Accession Number:

NM_016001

GeneID (NCBI):

51096

UNIPROT ID:

Q9Y5J1

Full Name:

UTP18, small subunit (SSU) processome component, homolog (yeast)

Calculated MW:

62 kDa

Observed MW:

62 kDa

Purification Method:

Antigen affinity purification

Recommended Dilutions:

WB 1:5000-1:50000

Applications

Tested Applications:

WB, ELISA

Species Specificity:

mouse, human

Positive Controls:

WB : HeLa cells, mouse brain tissue, mouse kidney tissue, Jurkat cells, SW480 cells

Background Information

UTP18 (UTP18 small subunit processome component), also known as WDR50. It is expected to be located in nucleus. The protein is one part of the small subunit (SSU) processome, first precursor of the small eukaryotic ribosomal subunit. During the assembly of the SSU processome in the nucleolus, many ribosome biogenesis factors, an RNA chaperone and ribosomal proteins associate with the nascent pre-rRNA and work in concert to generate RNA folding, modifications, rearrangements and cleavage as well as targeted degradation of pre-ribosomal RNA by the RNA exosome. Involved in nucleolar processing of pre-18S ribosomal RNA. The calculated molecular weight of UTP18 is 62 kDa.

Storage

Storage:

Store at -20°C. Stable for one year after shipment.

Storage Buffer:

PBS with 0.02% sodium azide and 50% glycerol pH 7.3.

Aliquoting is unnecessary for -20°C storage

*** 20ul sizes contain 0.1% BSA

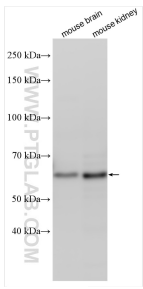
For technical support and original validation data for this product please contact:

T: 1 (888) 4PTGLAB (1-888-478-4522) (toll free in USA), or 1(312) 455-8498 (outside USA)

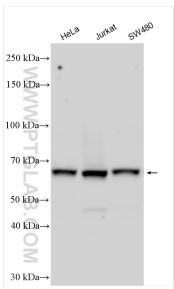
E: proteintech@ptglab.com
W: ptglab.com

This product is exclusively available under Proteintech Group brand and is not available to purchase from any other manufacturer.

Selected Validation Data



Various lysates were subjected to SDS PAGE followed by western blot with 31055-1-AP (UTP18 antibody) at dilution of 1:5000 incubated at room temperature for 1.5 hours.



Various lysates were subjected to SDS PAGE followed by western blot with 31055-1-AP (UTP18 antibody) at dilution of 1:40000 incubated at room temperature for 1.5 hours.