

For Research Use Only

# UTP18 Polyclonal antibody, PBS Only

Catalog Number: 31055-1-PBS

Featured Product



## Basic Information

**Catalog Number:**

31055-1-PBS

**Size:**

100ug, Concentration: 1 mg/ml by Nanodrop;

**Source:**

Rabbit

**Isotype:**

IgG

**Immunogen Catalog Number:**

AG34662

**GenBank Accession Number:**

NM\_016001

**GeneID (NCBI):**

51096

**UNIPROT ID:**

Q9Y5J1

**Full Name:**

UTP18, small subunit (SSU) processome component, homolog (yeast)

**Calculated MW:**

62 kDa

**Observed MW:**

62 kDa

**Purification Method:**

Antigen affinity purification

## Applications

**Tested Applications:**

WB, Indirect ELISA

**Species Specificity:**

human, mouse

## Background Information

UTP18 (UTP18 small subunit processome component), also known as WDR50. It is expected to be located in nucleus. The protein is one part of the small subunit (SSU) processome, first precursor of the small eukaryotic ribosomal subunit. During the assembly of the SSU processome in the nucleolus, many ribosome biogenesis factors, an RNA chaperone and ribosomal proteins associate with the nascent pre-rRNA and work in concert to generate RNA folding, modifications, rearrangements and cleavage as well as targeted degradation of pre-ribosomal RNA by the RNA exosome. Involved in nucleolar processing of pre-18S ribosomal RNA. The calculated molecular weight of UTP18 is 62 kDa.

## Storage

**Storage:**

Store at -80°C.

**Storage Buffer:**

PBS only, pH7.3

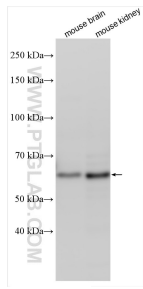
For technical support and original validation data for this product please contact:

T: 1 (888) 4PTGLAB (1-888-478-4522) (toll free in USA), or 1(312) 455-8498 (outside USA)

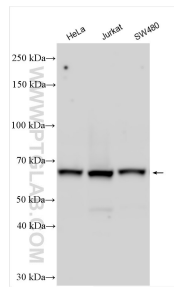
E: [proteintech@ptglab.com](mailto:proteintech@ptglab.com)  
W: [ptglab.com](http://ptglab.com)

**This product is exclusively available under Proteintech Group brand and is not available to purchase from any other manufacturer.**

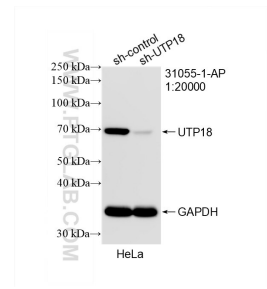
## Selected Validation Data



Various lysates were subjected to SDS PAGE followed by western blot with 31055-1-AP (UTP18 antibody) at dilution of 1:5000 incubated at room temperature for 1.5 hours. This data was developed using the same antibody clone with 31055-1-PBS in a different storage buffer formulation.



Various lysates were subjected to SDS PAGE followed by western blot with 31055-1-AP (UTP18 antibody) at dilution of 1:40000 incubated at room temperature for 1.5 hours. This data was developed using the same antibody clone with 31055-1-PBS in a different storage buffer formulation.



WB result of UTP18 antibody (31055-1-AP; 1:20000; incubated at room temperature for 1.5 hours) with sh-Control and sh-UTP18 transfected HeLa cells. This data was developed using the same antibody clone with 31055-1-PBS in a different storage buffer formulation.