

For Research Use Only

IFI35 Polyclonal antibody

Catalog Number: 31061-1-AP



Basic Information

Catalog Number: 31061-1-AP	GenBank Accession Number: BC001356	Purification Method: Antigen affinity Purification
Size: 150ul , Concentration: 600 µg/ml by Nanodrop;	GeneID (NCBI): 3430	Recommended Dilutions: WB 1:1000-1:4000
Source: Rabbit	Full Name: interferon-induced protein 35	
Isotype: IgG	Calculated MW: 31 kDa	
Immunogen Catalog Number: AG34653	Observed MW: 31-35 kDa	

Applications

Tested Applications: WB, ELISA	Positive Controls: WB : A549 cells, HeLa cells, Jurkat cells, SW480 cells
Species Specificity: Human	

Background Information

IFI35 (interferon induced protein 35), also known as IFP35. It is expected to be located in cytoplasm, nucleus and extracellular space. The protein is expressed in a wide range of cell types, including fibroblasts, macrophages, and epithelial cells. Involved in several processes, including macrophage activation involved in immune response; positive regulation of defense response; and regulation of signal transduction. And the calculated molecular weight of IFI35 is 31 kDa.

Storage

Storage:
Store at -20°C. Stable for one year after shipment.
Storage Buffer:
PBS with 0.02% sodium azide and 50% glycerol pH 7.3.
Aliquoting is unnecessary for -20°C storage

*** 20ul sizes contain 0.1% BSA

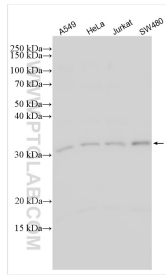
For technical support and original validation data for this product please contact:

T: 1 (888) 4PTGLAB (1-888-478-4522) (toll free in USA), or 1(312) 455-8498 (outside USA)

E: proteintech@ptglab.com
W: ptglab.com

This product is exclusively available under Proteintech Group brand and is not available to purchase from any other manufacturer.

Selected Validation Data



Various lysates were subjected to SDS PAGE followed by western blot with 31061-1-AP (IF135 antibody) at dilution of 1:2000 incubated at room temperature for 1.5 hours.