

For Research Use Only

SMOC2 Polyclonal antibody, PBS Only

Catalog Number: 31063-1-PBS

Featured Product



Basic Information

Catalog Number:

31063-1-PBS

Size:

100ug, Concentration: 1 mg/ml by Nanodrop;

Source:

Rabbit

Isotype:

IgG

Immunogen Catalog Number:

AG34966

GenBank Accession Number:

BC047583

GeneID (NCBI):

64094

UNIPROT ID:

Q9H3U7

Full Name:

SPARC related modular calcium binding 2

Calculated MW:

50 kDa

Observed MW:

49-50 kDa

Purification Method:

Antigen affinity Purification

Applications

Tested Applications:

WB, Indirect ELISA

Species Specificity:

human, mouse

Background Information

Secreted modular calcium-binding protein 2 (SMOC2), which is a member of the secreted protein acidic and rich in cysteine (SPARC) family of matricellular proteins, interacts with matrix proteins, cell surface receptors, cytokines, proteasomes and other effector molecules to regulate cell-cell and cell-microenvironment communication (PMID: 36513634). It is expected to be located in extracellular space. The calculated molecular weight of SMOC2 is 50 kDa. In recent years, SMOC2 has been reported to be highly expressed in tumor tissues and to promote tumor migration, invasion and growth. In addition to its role in tumor progression, it also regulates wound healing, bone growth, fibrosis and embryogenesis (PMID: 36513634).

Storage

Storage:

Store at -80°C.

Storage Buffer:

PBS only, pH7.3

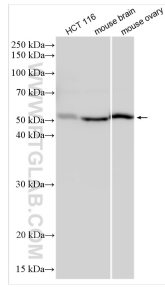
For technical support and original validation data for this product please contact:

T: 1 (888) 4PTGLAB (1-888-478-4522) (toll free in USA), or 1(312) 455-8498 (outside USA)

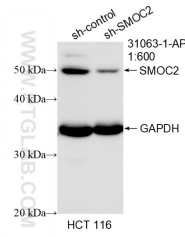
E: proteintech@ptglab.com
W: ptglab.com

This product is exclusively available under Proteintech Group brand and is not available to purchase from any other manufacturer.

Selected Validation Data



Various lysates were subjected to SDS PAGE followed by western blot with 31063-1-AP (SMOC2 antibody) at dilution of 1:1000 incubated at room temperature for 1.5 hours. This data was developed using the same antibody clone with 31063-1-PBS in a different storage buffer formulation.



WB result of SMOC2 antibody (31063-1-AP; 1:600; incubated at room temperature for 1.5 hours) with sh-Control and sh-SMOC2 transfected HCT 116 cells. This data was developed using the same antibody clone with 31063-1-PBS in a different storage buffer formulation.