

For Research Use Only

GOLIM4 Polyclonal antibody

Catalog Number: 31083-1-AP



Basic Information

Catalog Number: 31083-1-AP	GenBank Accession Number: NM_014498	Purification Method: Antigen affinity Purification
Size: 150ul , Concentration: 600 ug/ml by Nanodrop;	GeneID (NCBI): 27333	Recommended Dilutions: WB 1:5000-1:50000
Source: Rabbit	UNIPROT ID: O00461	IHC 1:1000-1:4000
Isotype: IgG	Full Name: golgi integral membrane protein 4	IF/ICC 1:300-1:1200
Immunogen Catalog Number: AG34962	Calculated MW: 82 kDa	
	Observed MW: 130 kDa	

Applications

Tested Applications: WB, IHC, IF/ICC, ELISA	Positive Controls:
Species Specificity: human	WB : HEK-293 cells, HeLa cells, HepG2 cells
Note-IHC: suggested antigen retrieval with TE buffer pH 9.0; (*) Alternatively, antigen retrieval may be performed with citrate buffer pH 6.0	IHC : human intrahepatic cholangiocarcinoma tissue,
	IF/ICC : HeLa cells,

Background Information

Golgi integral membrane protein 4 (GOLIM4) is a 130-kDa membrane protein that is integrated into the cis/medial Golgi apparatus, which is a kind II Golgi protein. GOLIM4 is a Golgi protein that circulates between Golgi apparatus and endosomes, and its shuttle is pH sensitive(PMID:30068697).

Storage

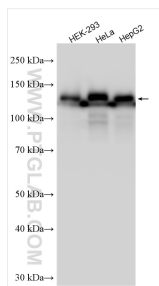
Storage:
Store at -20°C. Stable for one year after shipment.
Storage Buffer:
PBS with 0.02% sodium azide and 50% glycerol pH 7.3.
Aliquoting is unnecessary for -20°C storage

*** 20ul sizes contain 0.1% BSA

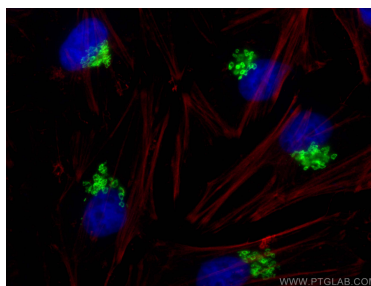
For technical support and original validation data for this product please contact:
T: 1 (888) 4PTGLAB (1-888-478-4522) (toll free in USA), or 1(312) 455-8498 (outside USA)
E: proteintech@ptglab.com
W: ptglab.com

This product is exclusively available under Proteintech Group brand and is not available to purchase from any other manufacturer.

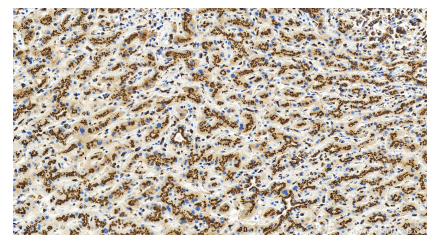
Selected Validation Data



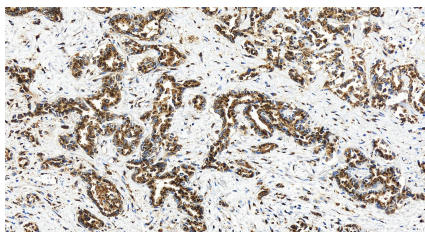
Various lysates were subjected to SDS PAGE followed by western blot with 31083-1-AP (GOLIM4 antibody) at dilution of 1:10000 incubated at room temperature for 1.5 hours.



Immunofluorescent analysis of (4% PFA) fixed HeLa cells using GOLIM4 antibody (31083-1-AP) at dilution of 1:600 and CoraLite®488-Conjugated AffiniPure Goat Anti-Rabbit IgG(H+L) (SA00013-2), CL594-phalloidin (red).



Immunohistochemical analysis of paraffin-embedded human intrahepatic cholangiocarcinoma tissue slide using 31083-1-AP (GOLIM4 antibody) at dilution of 1:2000 (under 20x lens). Heat mediated antigen retrieval with Tris-EDTA buffer (pH 9.0).



Immunohistochemical analysis of paraffin-embedded human intrahepatic cholangiocarcinoma tissue slide using 31083-1-AP (GOLIM4 antibody) at dilution of 1:2000 (under 20x lens). Heat mediated antigen retrieval with Tris-EDTA buffer (pH 9.0).