

For Research Use Only

# GOLIM4 Polyclonal antibody, PBS Only

Catalog Number: 31083-1-PBS

Featured Product



## Basic Information

**Catalog Number:**

31083-1-PBS

**Size:**

100ug, Concentration: 1 mg/ml by Nanodrop;

**Source:**

Rabbit

**Isotype:**

IgG

**Immunogen Catalog Number:**

AG34962

**GenBank Accession Number:**

NM\_014498

**GeneID (NCBI):**

27333

**UNIPROT ID:**

O00461

**Full Name:**

golgi integral membrane protein 4

**Calculated MW:**

82 kDa

**Observed MW:**

130 kDa

**Purification Method:**

Antigen affinity Purification

## Applications

**Tested Applications:**

WB, IHC, IF/ICC, Indirect ELISA

**Species Specificity:**

human

## Background Information

Golgi integral membrane protein 4 (GOLIM4) is a 130-kDa membrane protein that is integrated into the cis/medial Golgi apparatus, which is a kind II Golgi protein. GOLIM4 is a Golgi protein that circulates between Golgi apparatus and endosomes, and its shuttle is pH sensitive (PMID:30068697).

## Storage

**Storage:**

Store at -80°C.

**Storage Buffer:**

PBS only, pH7.3

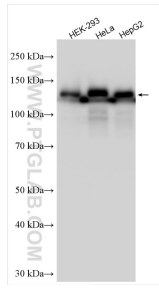
For technical support and original validation data for this product please contact:

T: 1 (888) 4PTGLAB (1-888-478-4522) (toll free in USA), or 1(312) 455-8498 (outside USA)

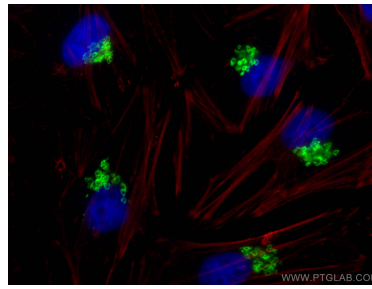
E: [proteintech@ptglab.com](mailto:proteintech@ptglab.com)  
W: [ptglab.com](http://ptglab.com)

This product is exclusively available under Proteintech Group brand and is not available to purchase from any other manufacturer.

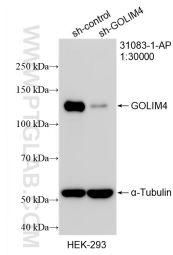
## Selected Validation Data



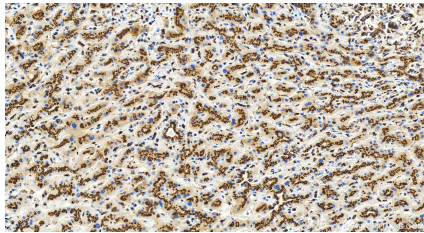
Various lysates were subjected to SDS PAGE followed by western blot with 31083-1-AP (GOLIM4 antibody) at dilution of 1:10000 incubated at room temperature for 1.5 hours. This data was developed using the same antibody clone with 31083-1-PBS in a different storage buffer formulation.



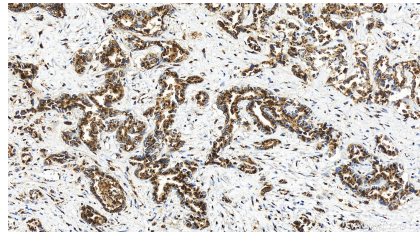
Immunofluorescent analysis of (4% PFA) fixed HeLa cells using GOLIM4 antibody (31083-1-AP) at dilution of 1:600 and CoraLite@488-Conjugated AffiniPure Goat Anti-Rabbit IgG(H+L) (SA00013-2), CL594-phalloidin (red). This data was developed using the same antibody clone with 31083-1-PBS in a different storage buffer formulation.



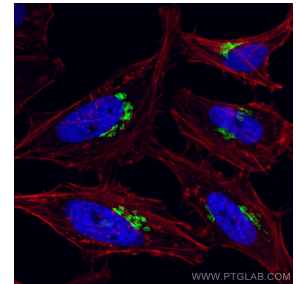
WB result of GOLIM4 antibody (31083-1-AP; 1:30000; incubated at room temperature for 1.5 hours) with sh-Control and sh-GOLIM4 transfected HEK-293 cells. This data was developed using the same antibody clone with 31083-1-PBS in a different storage buffer formulation.



Immunohistochemical analysis of paraffin-embedded human intrahepatic cholangiocarcinoma tissue slide using 31083-1-AP (GOLIM4 antibody) at dilution of 1:2000 (under 20x lens). Heat mediated antigen retrieval with Tris-EDTA buffer (pH 9.0). This data was developed using the same antibody clone with 31083-1-PBS in a different storage buffer formulation.



Immunohistochemical analysis of paraffin-embedded human intrahepatic cholangiocarcinoma tissue slide using 31083-1-AP (GOLIM4 antibody) at dilution of 1:2000 (under 20x lens). Heat mediated antigen retrieval with Tris-EDTA buffer (pH 9.0). This data was developed using the same antibody clone with 31083-1-PBS in a different storage buffer formulation.



Immunofluorescent analysis of (4% PFA) fixed HeLa cells using GOLIM4 antibody (31083-1-AP) at dilution of 1:600 and CoraLite@488-Conjugated Goat Anti-Rabbit IgG(H+L) (SA00013-2), CoraLite@594-Phalloidin (red). This data was developed using the same antibody clone with 31083-1-PBS in a different storage buffer formulation.