

For Research Use Only

# CXL15 Polyclonal antibody

Catalog Number: 31087-1-AP



## Basic Information

<b>Catalog Number:</b> 31087-1-AP	<b>GenBank Accession Number:</b> BC061138	<b>Purification Method:</b> Antigen affinity Purification
<b>Size:</b> 150ul , Concentration: 400 ug/ml by Nanodrop;	<b>GeneID (NCBI):</b> 20309	<b>Recommended Dilutions:</b> WB 1:500-1:2000
<b>Source:</b> Rabbit	<b>UNIPROT ID:</b> Q9WVL7	IP 0.5-4.0 ug for 1.0-3.0 mg of total protein lysate
<b>Isotype:</b> IgG	<b>Full Name:</b> chemokine (C-X-C motif) ligand 15	IHC 1:50-1:500
<b>Immunogen Catalog Number:</b> AG33964	<b>Calculated MW:</b> 19 kDa	
	<b>Observed MW:</b> 19 kDa	

## Applications

<b>Tested Applications:</b> WB, IHC, IP, ELISA	<b>Positive Controls:</b>
<b>Species Specificity:</b> mouse	WB : mouse lung tissue,
<b>Note-IHC:</b> suggested antigen retrieval with <b>TE buffer pH 9.0; (*) Alternatively, antigen retrieval may be performed with citrate buffer pH 6.0</b>	IP : mouse lung tissue,
	IHC : mouse lung tissue,

## Background Information

Cxcl15, also known as lungkine or WECHE, is a small cytokine belonging to the CXC chemokine family that has been described in the mouse. High levels of Cxcl15 mRNA were specifically detected in the lung and at lower levels in fetal lung tissue by Northern blot and in situ hybridization, suggesting a potential role for this chemokine during lung development. Moreover, the Cxcl15 protein is secreted into the airway spaces and induces the in vitro and in vivo migration of neutrophils, suggesting that it is involved in lung-specific neutrophil trafficking.

## Storage

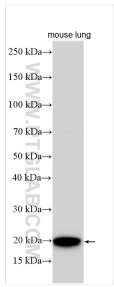
**Storage:**  
Store at -20°C. Stable for one year after shipment.  
**Storage Buffer:**  
PBS with 0.02% sodium azide and 50% glycerol pH 7.3.  
**Aliquoting is unnecessary for -20°C storage**

\*\*\* 20ul sizes contain 0.1% BSA

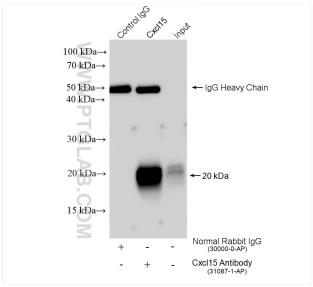
For technical support and original validation data for this product please contact:  
T: 1 (888) 4PTGLAB (1-888-478-4522) (toll free in USA), or 1(312) 455-8498 (outside USA)  
E: [proteintech@ptglab.com](mailto:proteintech@ptglab.com)  
W: [ptglab.com](http://ptglab.com)

This product is exclusively available under Proteintech Group brand and is not available to purchase from any other manufacturer.

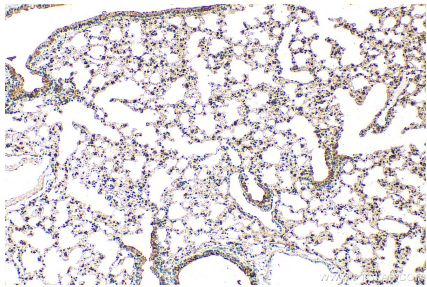
Selected Validation Data



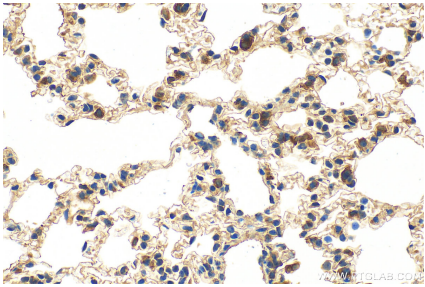
Mouse lung tissue were subjected to SDS PAGE followed by western blot with 31087-1-AP (CXL15 antibody) at dilution of 1:1000 incubated at room temperature for 1.5 hours.



IP result of anti-Cxcl15 (IP:31087-1-AP, 4ug; Detection:31087-1-AP 1:500) with mouse lung tissue lysate 1120 ug.



Immunohistochemical analysis of paraffin-embedded mouse lung tissue slide using 31087-1-AP (Cxl15 antibody) at dilution of 1:200 (under 10x lens). Heat mediated antigen retrieval with Tris-EDTA buffer (pH 9.0).



Immunohistochemical analysis of paraffin-embedded mouse lung tissue slide using 31087-1-AP (Cxl15 antibody) at dilution of 1:200 (under 40x lens). Heat mediated antigen retrieval with Tris-EDTA buffer (pH 9.0).