

# Nesprin1/Syne-1 Polyclonal antibody

Catalog Number: 31095-1-AP

## Basic Information

**Catalog Number:**

31095-1-AP

**Size:**

150ul , Concentration: 900 ug/ml by Nanodrop;

**Source:**

Rabbit

**Isotype:**

IgG

**Immunogen Catalog Number:**

AG34809

**GenBank Accession Number:**

BC039121

**GeneID (NCBI):**

23345

**UNIPROT ID:**

Q8NF91

**Full Name:**

spectrin repeat containing, nuclear envelope 1

**Observed MW:**

120 kDa, 367 kDa, 642 kDa, 1000 kDa

**Purification Method:**

Antigen affinity purification

**Recommended Dilutions:**

WB 1:1000-1:4000

## Applications

**Tested Applications:**

WB, ELISA

**Species Specificity:**

human, mouse

**Positive Controls:**

WB : HeLa cells, U2OS cells, mouse brain tissue

## Background Information

SYNE1, also known as spectrin repeat containing nuclear envelope protein 1. It is expressed in skeletal and smooth muscle, as well as peripheral blood lymphocytes, and localizes to the nuclear membrane. Mutations in the SYNE1 gene have been associated with several diseases, including autosomal recessive spinocerebellar ataxia type 8 (also referred to as autosomal recessive cerebellar ataxia type 1 or recessive ataxia of Beauce) and Emery-Dreifuss muscular dystrophy 4, autosomal dominant. The SYNE1 gene exhibits ubiquitous expression across various tissues, including the ovary and bone marrow. The molecular weight of the SYNE1 protein can vary depending on the specific isoform. For example, the full-length nesprin-1 isoform, also known as nesprin-1 giant, has 8797 amino acids and a molecular weight of approximately 1000 kDa. Another isoform, nesprin-1 $\alpha$ 2, has a molecular weight of about 120 kDa (PMID: 27782104). The protein has other isoforms with molecular weights of 380 kDa, 167 kDa and 642 kDa respectively.

## Storage

**Storage:**

Store at -20°C. Stable for one year after shipment.

**Storage Buffer:**

PBS with 0.02% sodium azide and 50% glycerol pH 7.3.

Aliquoting is unnecessary for -20°C storage

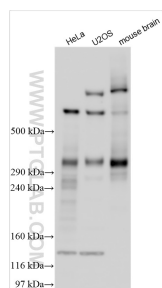
**\*\*\* 20ul sizes contain 0.1% BSA**

For technical support and original validation data for this product please contact:

T: 1 (888) 4PTGLAB (1-888-478-4522) (toll free in USA), or 1(312) 455-8498 (outside USA)

E: [proteintech@ptglab.com](mailto:proteintech@ptglab.com)  
W: [ptglab.com](http://ptglab.com)**This product is exclusively available under Proteintech Group brand and is not available to purchase from any other manufacturer.**

## Selected Validation Data



Various lysates were subjected to SDS PAGE followed by western blot with 31095-1-AP (SYNE1 antibody) at dilution of 1:2000 incubated at room temperature for 1.5 hours.