

For Research Use Only

Nesprin1/Syne-1 Polyclonal antibody, PBS Only

Catalog Number:31095-1-PBS



Basic Information

Catalog Number: 31095-1-PBS	GenBank Accession Number: BC039121	Purification Method: Antigen affinity purification
Size: 100ug , Concentration: 1 mg/ml by Nanodrop;	GeneID (NCBI): 23345	
Source: Rabbit	UNIPROT ID: Q8NF91	
Isotype: IgG	Full Name: spectrin repeat containing, nuclear envelope 1	
Immunogen Catalog Number: AG34809	Observed MW: 120 kDa, 367 kDa, 642 kDa, 1000 kDa	

Applications

Tested Applications:
WB, IHC, Indirect ELISA

Species Specificity:
human, mouse

Background Information

SYNE1, also known as spectrin repeat containing nuclear envelope protein 1. It is expressed in skeletal and smooth muscle, as well as peripheral blood lymphocytes, and localizes to the nuclear membrane. Mutations in the SYNE1 gene have been associated with several diseases, including autosomal recessive spinocerebellar ataxia type 8 (also referred to as autosomal recessive cerebellar ataxia type 1 or recessive ataxia of Beauce) and Emery-Dreifuss muscular dystrophy 4, autosomal dominant. The SYNE1 gene exhibits ubiquitous expression across various tissues, including the ovary and bone marrow. The molecular weight of the SYNE1 protein can vary depending on the specific isoform. For example, the full-length nesprin-1 isoform, also known as nesprin-1 giant, has 8797 amino acids and a molecular weight of approximately 1000 kDa. Another isoform, nesprin-1 α 2, has a molecular weight of about 120 kDa (PMID: 27782104). The protein has other isoforms with molecular weights of 380 kDa, 167 kDa and 642 kDa respectively.

Storage

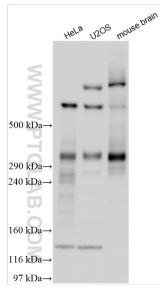
Storage:
Store at -80°C.

Storage Buffer:
PBS only, pH7.3

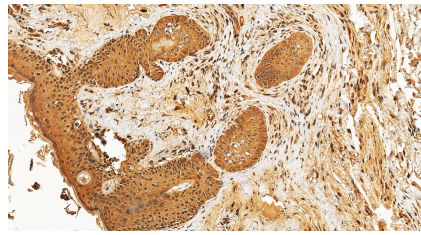
For technical support and original validation data for this product please contact:
T: 1 (888) 4PTGLAB (1-888-478-4522) (toll free in USA), or 1(312) 455-8498 (outside USA) E: proteintech@ptglab.com
W: ptglab.com

This product is exclusively available under Proteintech Group brand and is not available to purchase from any other manufacturer.

Selected Validation Data



Various lysates were subjected to Tris-Acetate gel system followed by western blot with 31095-1-AP (SYNE1 antibody) at dilution of 1:2000 incubated at room temperature for 1.5 hours. This data was developed using the same antibody clone with 31095-1-PBS in a different storage buffer formulation.



Immunohistochemical analysis of paraffin-embedded human skin squamous cell cancer tissue slide using 31095-1-AP (Nesprin1/Syne-1 antibody) at dilution of 1:400 (under 20x lens). Heat mediated antigen retrieval with Tris-EDTA buffer (pH 9.0). This data was developed using the same antibody clone with 31095-1-PBS in a different storage buffer formulation.